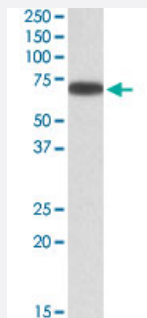


ERO1L polyclonal antibody

Catalog # PAB27602 Size 100 ug

Applications



Western Blot (Cell lysate)

ERO1L polyclonal antibody (Cat # PAB27602) (0.3ug/ml) staining of A-431 lysate (35ug protein in RIPA buffer). Primary incubation was 1 hour. Detected by chemiluminescence.

Specification

Product Description	Goat polyclonal antibody raised against synthetic peptide of ERO1L.
Immunogen	A synthetic peptide corresponding to amino acids 105-118 at internal region of human ERO1L.
Sequence	QSDEVPDGIKSASY
Host	Goat
Theoretical MW (kDa)	70
Reactivity	Chicken, Dog, Human, Mouse, Pig, Rat
Purification	Antigen affinity purification
Concentration	0.5 mg/mL
Recommend Usage	ELISA (1:32000) Western Blot (0.1-0.3ug/ml) The optimal working dilution should be determined by the end user.
Storage Buffer	In Tris saline, pH 7.3 (0.02% sodium azide, 0.5% BSA)

Storage Instruction

Store at -20°C.
Aliquot to avoid repeated freezing and thawing.

Note

This product contains sodium azide: a POISONOUS AND HAZARDOUS SUBSTANCE which should be handled by trained staff only.

Applications

- Western Blot (Cell lysate)

ERO1L polyclonal antibody (Cat # PAB27602) (0.3ug/ml) staining of A-431 lysate (35ug protein in RIPA buffer). Primary incubation was 1 hour. Detected by chemiluminescence.

Gene Info — ERO1L

Entrez GeneID [30001](#)

Protein Accession# [NP_055399.1](#)

Gene Name ERO1L

Gene Alias ERO1-alpha

Gene Description ERO1-like (S. cerevisiae)

Gene Ontology [Hyperlink](#)

Other Designations ERO1-like

Pathway

- [Vibrio cholerae infection](#)

Disease

- [Tobacco Use Disorder](#)