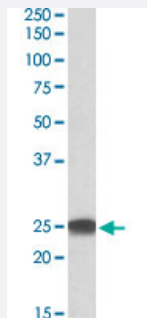


PSMB4 polyclonal antibody

Catalog # PAB27598

Size 100 ug

Applications



Western Blot (Cell lysate)

PSMB4 polyclonal antibody (Cat # PAB27598) (0.3ug/ml) staining of HEK293 lysate (35ug protein in RIPA buffer). Primary incubation was 1 hour. Detected by chemiluminescence.

Specification

Product Description	Goat polyclonal antibody raised against synthetic peptide of PSMB4.
Immunogen	A synthetic peptide corresponding to internal region of human PSMB4.
Sequence	QIATVTEKGVE
Host	Goat
Theoretical MW (kDa)	25
Reactivity	Chicken, Dog, Human, Mouse, Rabbit, Rat
Purification	Antigen affinity purification
Concentration	0.5 mg/mL
Recommend Usage	ELISA (1:16000) Western Blot (0.3-1 ug/ml) The optimal working dilution should be determined by the end user.
Storage Buffer	In Tris saline, pH 7.3 (0.02% sodium azide, 0.5% BSA)

Storage Instruction

Store at -20°C.
Aliquot to avoid repeated freezing and thawing.

Note

This product contains sodium azide: a POISONOUS AND HAZARDOUS SUBSTANCE which should be handled by trained staff only.

Applications

- Western Blot (Cell lysate)

PSMB4 polyclonal antibody (Cat # PAB27598) (0.3ug/ml) staining of HEK293 lysate (35ug protein in RIPA buffer). Primary incubation was 1 hour. Detected by chemiluminescence.

Gene Info — PSMB4

Entrez GeneID[5692](#)**Protein Accession#**[NP_002787.2](#)**Gene Name**

PSMB4

Gene Alias

HN3, HsN3, PROS26

Gene Description

proteasome (prosome, macropain) subunit, beta type, 4

Omim ID[602177](#)**Gene Ontology**[Hyperlink](#)**Gene Summary**

The proteasome is a multicatalytic proteinase complex with a highly ordered ring-shaped 20S core structure. The core structure is composed of 4 rings of 28 non-identical subunits; 2 rings are composed of 7 alpha subunits and 2 rings are composed of 7 beta subunits. Proteasomes are distributed throughout eukaryotic cells at a high concentration and cleave peptides in an ATP/ubiquitin-dependent process in a non-lysosomal pathway. An essential function of a modified proteasome, the immunoproteasome, is the processing of class I MHC peptides. This gene encodes a member of the proteasome B-type family, also known as the T1B family, that is a 20S core beta subunit. [provided by RefSeq]

Other Designations

macropain beta chain|multicatalytic endopeptidase complex beta chain|proteasome beta 4 subunit|proteasome beta chain|proteasome chain 3|proteasome subunit HsN3|proteasome subunit, beta type, 4

Pathway

- [Proteasome](#)

Disease

- [Cerebral Hemorrhage](#)
- [Depressive Disorder](#)
- [Genetic Predisposition to Disease](#)
- [Hypertension](#)
- [Inflammation](#)
- [Intracranial Hemorrhages](#)
- [Kidney Failure](#)
- [Stroke](#)
- [Subarachnoid Hemorrhage](#)
- [Tobacco Use Disorder](#)