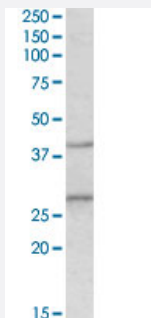


Fgf23 polyclonal antibody

Catalog # PAB27588

Size 100 ug

Applications



Western Blot (Tissue lysate)

Fgf23 polyclonal antibody (Cat # PAB27588) (0.5ug/ml) staining of mouse brain lysate (35ug protein in RIPA buffer). Primary incubation was 1 hour. Detected by chemiluminescence.

Specification

Product Description Goat polyclonal antibody raised against synthetic peptide of Fgf23.

Immunogen A synthetic peptide corresponding to internal region of mouse Fgf23.

Sequence ENGVDVYLSQKHH

Host Goat

Theoretical MW (kDa) 27, 38

Reactivity Mouse, Rat

Purification Antigen affinity purification

Concentration 0.5 mg/mL

Recommend Usage ELISA (1:16000)
Western Blot (0.5-2ug/ml)
The optimal working dilution should be determined by the end user.

Storage Buffer In Tris saline, pH 7.3 (0.02% sodium azide, 0.5% BSA)

Storage Instruction

Store at -20°C.
Aliquot to avoid repeated freezing and thawing.

Note

This product contains sodium azide: a POISONOUS AND HAZARDOUS SUBSTANCE which should be handled by trained staff only.

Applications

- Western Blot (Tissue lysate)

Fgf23 polyclonal antibody (Cat # PAB27588) (0.5ug/ml) staining of mouse brain lysate (35ug protein in RIPA buffer). Primary incubation was 1 hour. Detected by chemiluminescence.

Gene Info — Fgf23

Entrez GeneID[64654](#)**Protein Accession#**[NP_073148.1](#)**Gene Name**

Fgf23

Gene Alias

-

Gene Description

fibroblast growth factor 23

Gene Ontology[Hyperlink](#)**Other Designations**

-