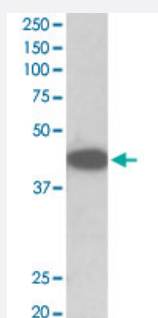


Trib1 polyclonal antibody

Catalog # PAB27583 Size 100 ug

Applications



Western Blot (Cell lysate)

Trib1 polyclonal antibody (Cat # PAB27583) (0.1ug/ml) staining of NIH3T3 lysate (35ug protein in RIPA buffer). Primary incubation was 1 hour. Detected by chemiluminescence.

Specification

Product Description	Goat polyclonal antibody raised against synthetic peptide of Trib1.
Immunogen	A synthetic peptide corresponding to amino acids 304-317 at internal region of mouse Trib1.
Sequence	PEHVSPKARCLIRS
Host	Goat
Theoretical MW (kDa)	42
Reactivity	Chicken, Dog, Human, Mouse, Rat
Purification	Antigen affinity purification
Concentration	0.5 mg/mL
Recommend Usage	ELISA (1:8000) Western Blot (0.1-0.3ug/ml) The optimal working dilution should be determined by the end user.
Storage Buffer	In Tris saline, pH 7.3 (0.02% sodium azide, 0.5% BSA)

Storage Instruction

Store at -20°C.
Aliquot to avoid repeated freezing and thawing.

Note

This product contains sodium azide: a POISONOUS AND HAZARDOUS SUBSTANCE which should be handled by trained staff only.

Applications

- Western Blot (Cell lysate)

Trib1 polyclonal antibody (Cat # PAB27583) (0.1ug/ml) staining of NIH3T3 lysate (35ug protein in RIPA buffer). Primary incubation was 1 hour. Detected by chemiluminescence.

Gene Info — Trib1

Entrez GeneID [211770](#)

Protein Accession# [NP_653132.1](#)

Gene Name Trib1

Gene Alias A530090O15Rik, TRB-1, Trb1

Gene Description tribbles homolog 1 (Drosophila)

Gene Ontology [Hyperlink](#)

Other Designations tribbles homolog 1