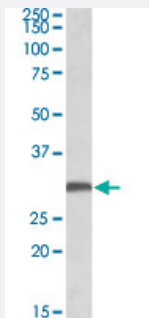


# FGF13 polyclonal antibody (isoform 1)

Catalog # PAB27533      Size 100 ug

## Applications



### Western Blot (Tissue lysate)

FGF13 polyclonal antibody (isoform 1) (Cat # PAB27533) (0.5ug/ml) staining of mouse brain lysate (35ug protein in RIPA buffer). Primary incubation was 1 hour. Detected by chemiluminescence.

## Specification

<b>Product Description</b>	Goat polyclonal antibody raised against synthetic peptide of FGF13.
<b>Immunogen</b>	A synthetic peptide corresponding to internal region of human FGF13.
<b>Sequence</b>	KGKTSCDKNKLVFS
<b>Host</b>	Goat
<b>Theoretical MW (kDa)</b>	28
<b>Reactivity</b>	Chicken, Dog, Human, Mouse, Pig
<b>Purification</b>	Antigen affinity purification
<b>Concentration</b>	0.5 mg/mL
<b>Recommend Usage</b>	ELISA (1:32000) Western Blot (0.3-1 ug/ml) The optimal working dilution should be determined by the end user.
<b>Storage Buffer</b>	In Tris saline, pH 7.3 (0.02% sodium azide, 0.5% BSA)

**Storage Instruction**

Store at -20°C.  
Aliquot to avoid repeated freezing and thawing.

**Note**

This product contains sodium azide: a POISONOUS AND HAZARDOUS SUBSTANCE which should be handled by trained staff only.

## Applications

- Western Blot (Tissue lysate)

FGF13 polyclonal antibody (isoform 1) (Cat # PAB27533) (0.5ug/ml) staining of mouse brain lysate (35ug protein in RIPA buffer). Primary incubation was 1 hour. Detected by chemiluminescence.

## Gene Info — FGF13

**Entrez GeneID**[2258](#)**Protein Accession#**[NP\\_004105.1](#)**Gene Name**

FGF13

**Gene Alias**

FGF2, FHF2

**Gene Description**

fibroblast growth factor 13

**Omim ID**[300070](#)**Gene Ontology**[Hyperlink](#)**Gene Summary**

The protein encoded by this gene is a member of the fibroblast growth factor (FGF) family. FGF family members possess broad mitogenic and cell survival activities, and are involved in a variety of biological processes, including embryonic development, cell growth, morphogenesis, tissue repair, tumor growth, and invasion. This gene is located in a region on chromosome X, which is associated with Borjeson-Forssman-Lehmann syndrome (BFLS), making it a possible candidate gene for familial cases of the BFLS, and for other syndromal and nonspecific forms of X-linked mental retardation mapping to this region. Alternative splicing of this gene at the 5' end results in several transcript variants encoding different isoforms with different N-termini. [provided by RefSeq]

**Other Designations**

OTTHUMP00000024143|OTTHUMP00000024144|fibroblast growth factor homologous factor 2

## Publication Reference

- [Porcine cytokines, chemokines and growth factors: 2019 update.](#)

Harry D Dawson, Yongming Sang, Joan K Lunney.

Research in Veterinary Science 2020 Aug; 131:266.

Application: WB, Recombinant proteins

## Pathway

- [MAPK signaling pathway](#)
- [Melanoma](#)
- [Pathways in cancer](#)
- [Regulation of actin cytoskeleton](#)

## Disease

- [Alzheimer disease](#)
- [Cardiovascular Diseases](#)
- [Diabetes Complications](#)
- [Metabolic Syndrome X](#)
- [Neoplasms](#)
- [Osteoporosis](#)