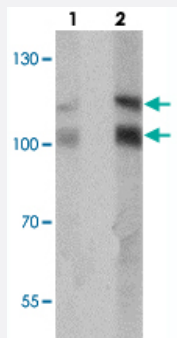


# RNF20 polyclonal antibody

Catalog # PAB27430      Size 100 ug

## Applications



### Western Blot (Tissue lysate)

Western blot analysis of RNF20 in human liver tissue with RNF20 polyclonal antibody (Cat # PAB27430) at (lane 1) 1 and (lane 2) 2 ug/mL.

## Specification

<b>Product Description</b>	Rabbit polyclonal antibody raised against synthetic peptide of RNF20.
<b>Immunogen</b>	A synthetic peptide corresponding to 19 amino acids at N-terminus of human RNF20.
<b>Host</b>	Rabbit
<b>Reactivity</b>	Human, Mouse
<b>Specificity</b>	Multiple isoforms of RNF20 are known to exist.
<b>Form</b>	Liquid
<b>Purification</b>	Peptide affinity purification
<b>Concentration</b>	1 mg/mL
<b>Isotype</b>	IgG
<b>Recommend Usage</b>	Western Blot (1-2 ug/mL) Immunohistochemistry (2.5 ug/mL) Immunofluorescence (20 ug/mL) The optimal working dilution should be determined by the end user.

Storage Buffer	In PBS (0.02% sodium azide)
Storage Instruction	Store at 4°C for three months. For long term storage store at -20°C. Aliquot to avoid repeated freezing and thawing.
Note	This product contains sodium azide: a POISONOUS AND HAZARDOUS SUBSTANCE which should be handled by trained staff only.

## Applications

- Western Blot (Tissue lysate)

Western blot analysis of RNF20 in human liver tissue with RNF20 polyclonal antibody (Cat # PAB27430) at (lane 1) 1 and (lane 2) 2 ug/mL.

- Immunohistochemistry

- Immunofluorescence

- Enzyme-linked Immunoabsorbent Assay

## Gene Info — RNF20

Entrez GeneID	<a href="#">56254</a>
Protein Accession#	<a href="#">NP_062538</a>
Gene Name	RNF20
Gene Alias	BRE1, BRE1A, FLJ11189, FLJ20382, KIAA2779, MGC129667, MGC129668, hBRE1
Gene Description	ring finger protein 20
Omim ID	<a href="#">607699</a>
Gene Ontology	<a href="#">Hyperlink</a>
Gene Summary	The protein encoded by this gene shares similarity with BRE1 of <i>S. cerevisiae</i> . Yeast BRE1 is a ubiquitin ligase required for the ubiquitination of histone H2B and the methylation of histone H3. [provided by RefSeq]
Other Designations	BRE1 E3 ubiquitin ligase homolog homolog of <i>S. cerevisiae</i> BRE1