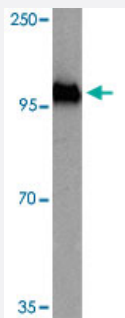


# PST1 polyclonal antibody

Catalog # PAB27202      Size 100 ug

## Applications



### Western Blot (Cell lysate)

Western blot analysis of PST1 in Yeast with PST1 polyclonal antibody (Cat # PAB27202) at 1 ug/mL.

## Specification

**Product Description** Rabbit polyclonal antibody raised against synthetic peptide of PST1.

**Immunogen** A synthetic peptide corresponding to N-terminus of yeast PST1.

**Host** Rabbit

**Reactivity** Yeast

**Form** Liquid

**Purification** Peptide affinity purification

**Concentration** 1 mg/mL

**Isotype** IgG

**Recommend Usage** Western Blot (1 ug/mL)  
The optimal working dilution should be determined by the end user.

**Storage Buffer** In PBS (0.02% sodium azide)

**Storage Instruction** Store at 4°C for three months. For long term storage store at -20°C.  
Aliquot to avoid repeated freezing and thawing.

**Note**

This product contains sodium azide: a POISONOUS AND HAZARDOUS SUBSTANCE which should be handled by trained staff only.

## Applications

- Western Blot (Cell lysate)

Western blot analysis of PST1 in Yeast with PST1 polyclonal antibody (Cat # PAB27202) at 1 ug/mL.

- Enzyme-linked Immunoabsorbent Assay

## Gene Info — PST1

Entrez GeneID	<a href="#">851625</a>
---------------	------------------------

Protein Accession#	<a href="#">Q12355</a>
--------------------	------------------------

Gene Name	PST1
-----------	------

Gene Alias	HPF2
------------	------

Gene Description	Cell wall protein that contains a putative GPI-attachment site; secreted by regenerating protoplasts; up-regulated by activation of the cell integrity pathway, as mediated by Rlm1p; upregulated by cell wall damage via disruption of FKS1
------------------	--

Gene Ontology	<a href="#">Hyperlink</a>
---------------	---------------------------

Gene Summary	Pst1p
--------------	-------

Other Designations	Pst1p
--------------------	-------