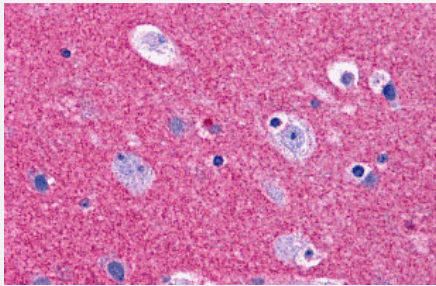


RIMS2 polyclonal antibody

Catalog # PAB27184 Size 100 ug

Applications



Immunohistochemistry

Immunohistochemistry analysis of RIMS2 in human brain tissue with RIMS2 polyclonal antibody (Cat # PAB27184) at 5 ug/mL.

Specification

Product Description	Rabbit polyclonal antibody raised against synthetic peptide of RIMS2.
Immunogen	A synthetic peptide corresponding to 17 amino acids at internal region of human RIMS2.
Host	Rabbit
Reactivity	Human
Specificity	RIM2 antibody is human specific. Multiple isoforms of RIM2 are known to exist.
Form	Liquid
Purification	Peptide affinity purification
Concentration	1 mg/mL
Isotype	IgG
Recommend Usage	Immunohistochemistry (5 ug/mL) The optimal working dilution should be determined by the end user.
Storage Buffer	In PBS (0.02% sodium azide)

Storage Instruction

Store at 4°C for three months. For long term storage store at -20°C.
Aliquot to avoid repeated freezing and thawing.

Note

This product contains sodium azide: a POISONOUS AND HAZARDOUS SUBSTANCE which should be handled by trained staff only.

Applications

- Immunohistochemistry

Immunohistochemistry analysis of RIMS2 in human brain tissue with RIMS2 polyclonal antibody (Cat # PAB27184) at 5 ug/mL.

- Enzyme-linked Immunoabsorbent Assay

Gene Info — RIMS2

Entrez GeneID[9699](#)**Protein Accession#**[NP_001093587](#)**Gene Name**

RIMS2

Gene Alias

DKFZp781A0653, KIAA0751, OBOE, RAB3IP3, RIM2

Gene Description

regulating synaptic membrane exocytosis 2

Omim ID[606630](#)**Gene Ontology**[Hyperlink](#)**Other Designations**RAB3 interacting protein 3|non-small cell lung cancer RimL3a protein|non-small cell lung cancer R
imL3c protein|nuclear protein

Disease

- [Genetic Predisposition to Disease](#)

- [Heroin Dependence](#)

- [Tobacco Use Disorder](#)