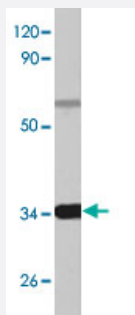


# CEBPB polyclonal antibody

Catalog # PAB27156      Size 100 uL

## Applications



### Western Blot (Cell lysate)

Western blot analysis of HeLa cell lysate with CEBPB polyclonal antibody (Cat # PAB27156) at 1:500 dilution.

## Specification

<b>Product Description</b>	Rabbit polyclonal antibody raised against synthetic peptide of CEBPB.
<b>Immunogen</b>	A synthetic peptide corresponding to human CEBPB.
<b>Host</b>	Rabbit
<b>Theoretical MW (kDa)</b>	~36.0
<b>Reactivity</b>	Human, Mouse
<b>Specificity</b>	CEBPB polyclonal antibody detects endogenous levels of CEBPB protein.
<b>Form</b>	Liquid
<b>Purification</b>	Antigen affinity purification
<b>Recommend Usage</b>	Western Blot (1:500-1:1000) Immunohistochemistry (1:50-1:200) The optimal working dilution should be determined by the end user.
<b>Storage Buffer</b>	In PBS, pH 7.2 (0.09% sodium azide)

**Storage Instruction**

Store at 4°C. For long term storage store at -20°C.  
Aliquot to avoid repeated freezing and thawing.

**Note**

This product contains sodium azide: a POISONOUS AND HAZARDOUS SUBSTANCE which should be handled by trained staff only.

## Applications

- Western Blot (Cell lysate)

Western blot analysis of HeLa cell lysate with CEBPB polyclonal antibody (Cat # PAB27156) at 1:500 dilution.

- Immunohistochemistry

## Gene Info — CEBPB

**Entrez GeneID**[1051](#)**Protein Accession#**[P17676](#)**Gene Name**

CEBPB

**Gene Alias**

C/EBP-beta, CRP2, IL6DBP, LAP, MGC32080, NF-IL6, TCF5

**Gene Description**

CCAAT/enhancer binding protein (C/EBP), beta

**Omim ID**[189965](#)**Gene Ontology**[Hyperlink](#)**Gene Summary**

The protein encoded by this intronless gene is a bZIP transcription factor which can bind as a homodimer to certain DNA regulatory regions. It can also form heterodimers with the related proteins CEBP-alpha, CEBP-delta, and CEBP-gamma. The encoded protein is important in the regulation of genes involved in immune and inflammatory responses and has been shown to bind to the IL-1 response element in the IL-6 gene, as well as to regulatory regions of several acute-phase and cytokine genes. In addition, the encoded protein can bind the promoter and upstream element and stimulate the expression of the collagen type I gene. [provided by RefSeq]

**Other Designations**

CCAAT/enhancer binding protein beta|interleukin 6-dependent DNA-binding protein|liver-enriched transcriptional activator protein|nuclear factor of interleukin 6|transcription factor 5

## Disease

- [Genetic Predisposition to Disease](#)

- [Obesity](#)