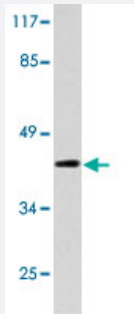


DLX3 polyclonal antibody

Catalog # PAB27148

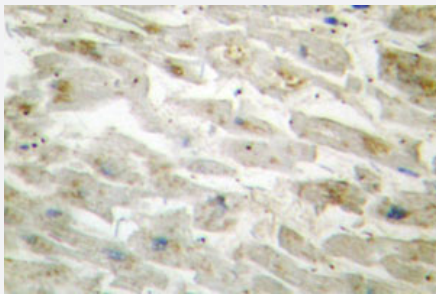
Size 100 uL

Applications



Western Blot (Cell lysate)

Western blot analysis of 293 cell lysate with DLX3 polyclonal antibody (Cat # PAB27148).



Immunohistochemistry (Formalin/PFA-fixed paraffin-embedded sections)

Immunohistochemical analysis of paraffin-embedded human heart tissue using DLX3 polyclonal antibody (Cat # PAB27148).

Specification

Product Description	Rabbit polyclonal antibody raised against synthetic peptide of DLX3.
Immunogen	A synthetic peptide corresponding to human DLX3.
Host	Rabbit
Theoretical MW (kDa)	45
Reactivity	Human, Mouse
Specificity	DLX3 polyclonal antibody detects endogenous levels of DLX3 protein.
Form	Liquid

Purification	Antigen affinity purification
Concentration	1 mg/mL
Recommend Usage	Western Blot (1:500-1:1000) Immunohistochemistry (1:50-1:200) The optimal working dilution should be determined by the end user.
Storage Buffer	In PBS, pH 7.2 (0.05% sodium azide)
Storage Instruction	Store at 4°C. For long term storage store at -20°C. Aliquot to avoid repeated freezing and thawing.
Note	This product contains sodium azide: a POISONOUS AND HAZARDOUS SUBSTANCE which should be handled by trained staff only.

Applications

- Western Blot (Cell lysate)

Western blot analysis of 293 cell lysate with DLX3 polyclonal antibody (Cat # PAB27148).

- Immunohistochemistry (Formalin/PFA-fixed paraffin-embedded sections)

Immunohistochemical analysis of paraffin-embedded human heart tissue using DLX3 polyclonal antibody (Cat # PAB27148).

Gene Info — DLX3

Entrez GeneID	1747
Protein Accession#	O60479
Gene Name	DLX3
Gene Alias	A4, TDO
Gene Description	distal-less homeobox 3
Omim ID	104510 190320 600525
Gene Ontology	Hyperlink

Gene Summary

Many vertebrate homeo box-containing genes have been identified on the basis of their sequence similarity with Drosophila developmental genes. Members of the Dlx gene family contain a homeo box that is related to that of Distal-less (Dll), a gene expressed in the head and limbs of the developing fruit fly. The Distal-less (Dlx) family of genes comprises at least 6 different members, DLX1-DLX6. Trichodontoosseous syndrome (TDO), an autosomal dominant condition, has been correlated with DLX3 gene mutation. This gene is located in a tail-to-tail configuration with another member of the gene family on the long arm of chromosome 17. Mutations in this gene have been associated with the autosomal dominant conditions trichodontoosseous syndrome and amelogenesis imperfecta with taurodontism. [provided by RefSeq]

Other Designations

distal-less homeo box 3

Disease

- [Abnormalities](#)
- [Cleft Lip](#)
- [Cleft Palate](#)
- [Genetic Predisposition to Disease](#)
- [Syndrome](#)
- [Tooth Abnormalities](#)