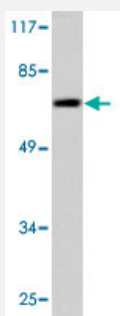


SF1 polyclonal antibody

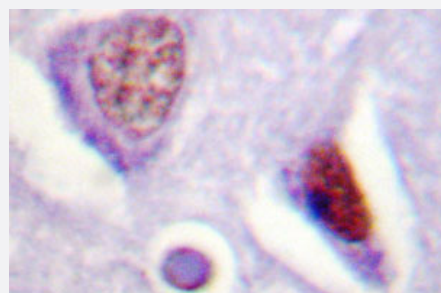
Catalog # PAB27116 Size 100 uL

Applications



Western Blot (Cell lysate)

Western blot analysis of HeLa cell lysate treated with TNF-α 20ng/ml 2' treated. Using SF1 polyclonal antibody (Cat # PAB27116).



Immunohistochemistry (Formalin/PFA-fixed paraffin-embedded sections)

Immunohistochemical analysis of paraffin-embedded human brain tissue using SF1 polyclonal antibody (Cat # PAB27116).

Specification

Product Description	Rabbit polyclonal antibody raised against synthetic peptide of SF1.
Immunogen	A synthetic peptide corresponding to human SF1.
Host	Rabbit
Theoretical MW (kDa)	68
Reactivity	Human, Mouse
Specificity	SF1 polyclonal antibody detects endogenous levels of SF1 protein.
Form	Liquid

Purification	Antigen affinity purification
Concentration	1 mg/mL
Recommend Usage	Western Blot (1:500-1:1000) Immunohistochemistry (1:50-1:200) Immunofluorescence (1:50-1:200) The optimal working dilution should be determined by the end user.
Storage Buffer	In PBS, pH 7.2 (0.05% sodium azide)
Storage Instruction	Store at 4°C. For long term storage store at -20°C. Aliquot to avoid repeated freezing and thawing.
Note	This product contains sodium azide: a POISONOUS AND HAZARDOUS SUBSTANCE which should be handled by trained staff only.

Applications

- Western Blot (Cell lysate)

Western blot analysis of HeLa cell lysate treated with TNF- α 20ng/ml 2' treated. Using SF1 polyclonal antibody (Cat # PAB27116).

- Immunohistochemistry (Formalin/PFA-fixed paraffin-embedded sections)

Immunohistochemical analysis of paraffin-embedded human brain tissue using SF1 polyclonal antibody (Cat # PAB27116).

- Immunofluorescence

Gene Info — SF1

Entrez GeneID	7536
Protein Accession#	Q15637
Gene Name	SF1
Gene Alias	D11S636, ZFM1, ZNF162
Gene Description	splicing factor 1
Omim ID	601516
Gene Ontology	Hyperlink

Other Designations

OTTHUMP00000069749|OTTHUMP00000069750|OTTHUMP00000069752|zinc finger protein 162
