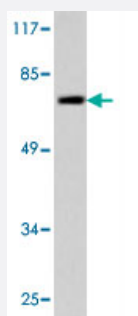


# SENP1 polyclonal antibody

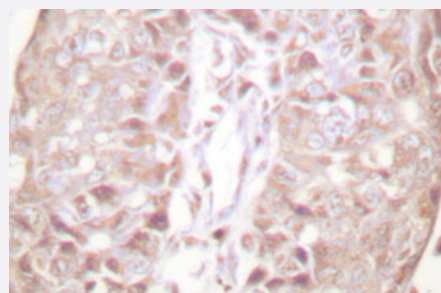
Catalog # PAB27099      Size 100 uL

## Applications



### Western Blot (Cell lysate)

Western blot analysis of Jurkat cell lysate with SENP1 polyclonal antibody (Cat # PAB27099).



### Immunohistochemistry (Formalin/PFA-fixed paraffin-embedded sections)

Immunohistochemical analysis of paraffin-embedded human breast cancer tissue using SENP1 polyclonal antibody (Cat # PAB27099).

## Specification

<b>Product Description</b>	Rabbit polyclonal antibody raised against synthetic peptide of SENP1.
<b>Immunogen</b>	A synthetic peptide corresponding to human SENP1.
<b>Host</b>	Rabbit
<b>Theoretical MW (kDa)</b>	73
<b>Reactivity</b>	Human, Mouse
<b>Specificity</b>	SENP1 polyclonal antibody detects endogenous levels of SENP1 protein.
<b>Form</b>	Liquid

<b>Purification</b>	Antigen affinity purification
<b>Concentration</b>	1 mg/mL
<b>Recommend Usage</b>	Western Blot (1:500-1:1000) Immunohistochemistry (1:50-1:200) The optimal working dilution should be determined by the end user.
<b>Storage Buffer</b>	In PBS, pH 7.2 (0.05% sodium azide)
<b>Storage Instruction</b>	Store at 4°C. For long term storage store at -20°C. Aliquot to avoid repeated freezing and thawing.
<b>Note</b>	This product contains sodium azide: a POISONOUS AND HAZARDOUS SUBSTANCE which should be handled by trained staff only.

## Applications

- Western Blot (Cell lysate)

Western blot analysis of Jurkat cell lysate with SENP1 polyclonal antibody (Cat # PAB27099).

- Immunohistochemistry (Formalin/PFA-fixed paraffin-embedded sections)

Immunohistochemical analysis of paraffin-embedded human breast cancer tissue using SENP1 polyclonal antibody (Cat # PAB27099).

## Gene Info — SENP1

<b>Entrez GeneID</b>	<a href="#">29843</a>
<b>Protein Accession#</b>	<a href="#">Q9P0U3</a>
<b>Gene Name</b>	SENP1
<b>Gene Alias</b>	SuPr-2
<b>Gene Description</b>	SUMO1/sentrin specific peptidase 1
<b>Gene Ontology</b>	<a href="#">Hyperlink</a>
<b>Gene Summary</b>	The covalent modification of proteins by the small ubiquitin (UBB; MIM 191339)-like protein SUMO (see SUMO1, MIM 601912) is implicated in the regulation of nucleocytoplasmic transport, genomic stability, gene transcription, and other processes. Sumoylation is catalyzed on target lysine residues by a multienzyme process and is reversed by desumoylating enzymes such as SENP1 (Yamaguchi et al., 2005 [PubMed 15923632]).[supplied by OMIM]

**Other Designations**

SUMO1/sentrin specific protease 1|sentrin/SUMO-specific protease|sentrin/SUMO-specific protease 1

---