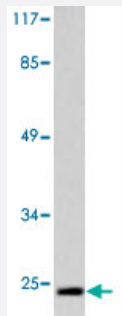


CLDN2 polyclonal antibody

Catalog # PAB27034

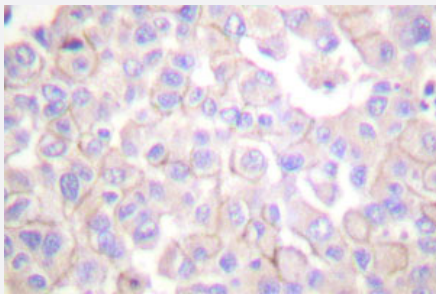
Size 100 uL

Applications



Western Blot (Cell lysate)

Western blot analysis of CLDN2 polyclonal antibody (Cat # PAB27034) in extracts from NIH/3T3 cells.



Immunohistochemistry (Formalin/PFA-fixed paraffin-embedded sections)

Immunohistochemical analysis of CLDN2 polyclonal antibody (Cat # PAB27034) in paraffin-embedded human breast carcinoma tissue.

Specification

| | |
|-----------------------------|---|
| Product Description | Rabbit polyclonal antibody raised against synthetic peptide of CLDN2. |
| Immunogen | A synthetic peptide corresponding to human CLDN2. |
| Host | Rabbit |
| Theoretical MW (kDa) | 25 |
| Reactivity | Human, Mouse |
| Specificity | CLDN2 polyclonal antibody detects endogenous levels of CLDN2 protein. |
| Form | Liquid |

| | |
|---------------------|--|
| Purification | Antigen affinity purification |
| Concentration | 1 mg/mL |
| Recommend Usage | Western Blot (1:500-1:1000) Immunohistochemistry (1:50-1:200) The optimal working dilution should be determined by the end user. |
| Storage Buffer | In PBS, pH 7.2 (0.05% sodium azide) |
| Storage Instruction | Store at 4°C. For long term storage store at -20°C. Aliquot to avoid repeated freezing and thawing. |
| Note | This product contains sodium azide: a POISONOUS AND HAZARDOUS SUBSTANCE which should be handled by trained staff only. |

Applications

- Western Blot (Cell lysate)

Western blot analysis of CLDN2 polyclonal antibody (Cat # PAB27034) in extracts from NIH/3T3 cells.

- Immunohistochemistry (Formalin/PFA-fixed paraffin-embedded sections)

Immunohistochemical analysis of CLDN2 polyclonal antibody (Cat # PAB27034) in paraffin-embedded human breast carcinoma tissue.

- Enzyme-linked Immunoabsorbent Assay

Gene Info — CLDN2

| | |
|--------------------|---------------------------|
| Entrez GeneID | 9075 |
| Protein Accession# | P57739 |
| Gene Name | CLDN2 |
| Gene Alias | - |
| Gene Description | claudin 2 |
| Omim ID | 300520 |
| Gene Ontology | Hyperlink |

Gene Summary

Members of the claudin protein family, such as CLDN2, are expressed in an organ-specific manner and regulate the tissue-specific physiologic properties of tight junctions (Sakaguchi et al., 2002 [PubMed 11934881]).[supplied by OMIM]

Other Designations

OTTHUMP00000023793

Pathway

- [Cell adhesion molecules \(CAMs\)](#)
- [Leukocyte transendothelial migration](#)
- [Tight junction](#)