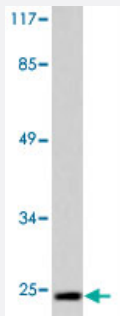


CLDN1 polyclonal antibody

Catalog # PAB27031

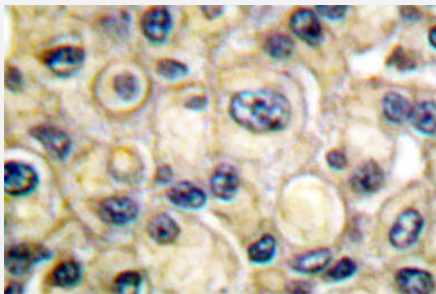
Size 100 uL

Applications



Western Blot (Cell lysate)

Western blot analysis of CLDN1 polyclonal antibody (Cat # PAB27031) in extracts from HeLa cells.



Immunohistochemistry (Formalin/PFA-fixed paraffin-embedded sections)

Immunohistochemical analysis of CLDN1 polyclonal antibody (Cat # PAB27031) in paraffin-embedded human breast carcinoma tissue.

Specification

Product Description	Rabbit polyclonal antibody raised against synthetic peptide of CLDN1.
Immunogen	A synthetic peptide corresponding to human CLDN1.
Host	Rabbit
Theoretical MW (kDa)	22
Reactivity	Human, Mouse, Rat
Specificity	CLDN1 polyclonal antibody detects endogenous levels of CLDN1 protein.
Form	Liquid

Purification	Antigen affinity purification
Concentration	1 mg/mL
Recommend Usage	Western Blot (1:500-1:1000) Immunohistochemistry (1:50-1:200) Immunofluorescence (1:50-1:200) The optimal working dilution should be determined by the end user.
Storage Buffer	In PBS, pH 7.2 (0.05% sodium azide)
Storage Instruction	Store at 4°C. For long term storage store at -20°C. Aliquot to avoid repeated freezing and thawing.
Note	This product contains sodium azide: a POISONOUS AND HAZARDOUS SUBSTANCE which should be handled by trained staff only.

Applications

- Western Blot (Cell lysate)

Western blot analysis of CLDN1 polyclonal antibody (Cat # PAB27031) in extracts from HeLa cells.

- Immunohistochemistry (Formalin/PFA-fixed paraffin-embedded sections)

Immunohistochemical analysis of CLDN1 polyclonal antibody (Cat # PAB27031) in paraffin-embedded human breast carcinoma tissue.

- Enzyme-linked Immunoabsorbent Assay

Gene Info — CLDN1

Entrez GeneID	9076
Protein Accession#	O95832
Gene Name	CLDN1
Gene Alias	CLD1, ILVASC, SEMP1
Gene Description	claudin 1
Omim ID	603718 607626
Gene Ontology	Hyperlink

Gene Summary

Tight junctions represent one mode of cell-to-cell adhesion in epithelial or endothelial cell sheets, forming continuous seals around cells and serving as a physical barrier to prevent solutes and water from passing freely through the paracellular space. These junctions are comprised of sets of continuous networking strands in the outwardly facing cytoplasmic leaflet, with complementary grooves in the inwardly facing extracytoplasmic leaflet. The protein encoded by this gene, a member of the claudin family, is an integral membrane protein and a component of tight junction strands. Loss of function mutations result in neonatal ichthyosis-sclerosing cholangitis syndrome. [provided by RefSeq]

Other Designations

senescence-associated epithelial membrane protein 1

Pathway

- [Cell adhesion molecules \(CAMs\)](#)
- [Leukocyte transendothelial migration](#)
- [Pathogenic Escherichia coli infection - EHEC](#)
- [Tight junction](#)

Disease

- [Genetic Predisposition to Disease](#)
- [Hepatitis C](#)
- [Substance Abuse](#)
- [Tobacco Use Disorder](#)