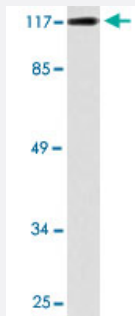


TUBGCP5 polyclonal antibody

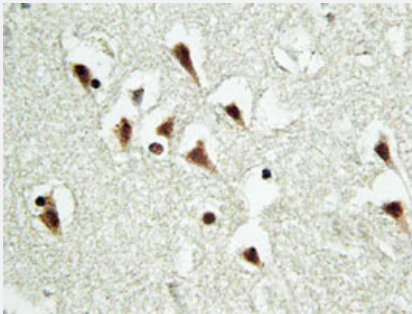
Catalog # PAB27000 Size 100 uL

Applications



Western Blot (Cell lysate)

Western blot analysis of HT-29 cell lysate with TUBGCP5 polyclonal antibody (Cat # PAB27000).



Immunohistochemistry (Formalin/PFA-fixed paraffin-embedded sections)

Immunohistochemical analysis of paraffin-embedded human brain tissue using TUBGCP5 polyclonal antibody (Cat # PAB27000).

Specification

Product Description	Rabbit polyclonal antibody raised against synthetic peptide of TUBGCP5.
Immunogen	A synthetic peptide corresponding to human TUBGCP5.
Host	Rabbit
Theoretical MW (kDa)	118
Reactivity	Human, Mouse
Specificity	TUBGCP5 polyclonal antibody detects endogenous levels of TUBGCP5 protein.
Form	Liquid

Purification	Antigen affinity purification
Concentration	1 mg/mL
Recommend Usage	Western Blot (1:500-1:1000) Immunohistochemistry (1:50-1:200) The optimal working dilution should be determined by the end user.
Storage Buffer	In PBS, pH 7.2 (0.05% sodium azide)
Storage Instruction	Store at 4°C. For long term storage store at -20°C. Aliquot to avoid repeated freezing and thawing.
Note	This product contains sodium azide: a POISONOUS AND HAZARDOUS SUBSTANCE which should be handled by trained staff only.

Applications

- Western Blot (Cell lysate)

Western blot analysis of HT-29 cell lysate with TUBGCP5 polyclonal antibody (Cat # PAB27000).

- Immunohistochemistry (Formalin/PFA-fixed paraffin-embedded sections)

Immunohistochemical analysis of paraffin-embedded human brain tissue using TUBGCP5 polyclonal antibody (Cat # PAB27000).

Gene Info — TUBGCP5

Entrez GeneID	114791
Protein Accession#	Q96RT8
Gene Name	TUBGCP5
Gene Alias	GCP5, KIAA1899
Gene Description	tubulin, gamma complex associated protein 5
Omim ID	608147
Gene Ontology	Hyperlink
Gene Summary	O
Other Designations	gamma-tubulin complex component GCP5