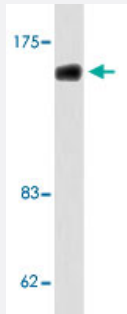


# CUX1 polyclonal antibody

Catalog # PAB26941      Size 100 uL

## Applications



### Western Blot (Cell lysate)

Western blot analysis of K-562 cell lysate with CUX1 polyclonal antibody (Cat # PAB26941).

## Specification

<b>Product Description</b>	Rabbit polyclonal antibody raised against synthetic peptide of CUX1.
<b>Immunogen</b>	A synthetic peptide corresponding to human CUX1.
<b>Host</b>	Rabbit
<b>Theoretical MW (kDa)</b>	164
<b>Reactivity</b>	Human, Mouse
<b>Specificity</b>	CUX1 polyclonal antibody detects endogenous levels of CUX1 protein.
<b>Form</b>	Liquid
<b>Purification</b>	Affinity purification
<b>Concentration</b>	1 mg/mL
<b>Recommend Usage</b>	Western Blot (1:500-1:1000) Immunohistochemistry (1:50-1:200) Immunofluorescence (1:50-1:200) The optimal working dilution should be determined by the end user.

Storage Buffer	In PBS, pH 7.2 (0.05% sodium azide)
Storage Instruction	Store at 4°C. For long term storage store at -20°C. Aliquot to avoid repeated freezing and thawing.
Note	This product contains sodium azide: a POISONOUS AND HAZARDOUS SUBSTANCE which should be handled by trained staff only.

## Applications

- Western Blot (Cell lysate)

Western blot analysis of K-562 cell lysate with CUX1 polyclonal antibody (Cat # PAB26941).

- Immunohistochemistry

- Immunofluorescence

## Gene Info — CUX1

Entrez GeneID	<a href="#">1523</a>
Protein Accession#	<a href="#">P39880</a>
Gene Name	CUX1
Gene Alias	CASP, CDP, CDP/Cut, CDP1, COY1, CUTL1, CUX, Clox, Cux/CDP, GOLIM6, Nbla10317, p100, p110, p200, p75
Gene Description	cut-like homeobox 1
Omim ID	<a href="#">116896</a>
Gene Ontology	<a href="#">Hyperlink</a>
Gene Summary	The protein encoded by this gene is a member of the homeodomain family of DNA binding proteins. It may regulate gene expression, morphogenesis, and differentiation and it may also play a role in the cell cycle progression. Several alternatively spliced transcript variants of this gene have been described, but the full-length nature of some of these variants has not been determined. [provided by RefSeq]
Other Designations	cut homeobox cut homolog cut-like 1, CCAAT displacement protein golgi integral membrane protein 6 putative protein product of Nbla10317

## Disease

- [Tobacco Use Disorder](#)