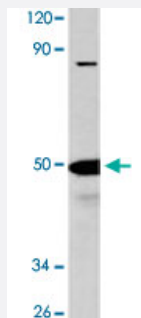


LTBR polyclonal antibody

Catalog # PAB26889 Size 100 uL

Applications



Western Blot (Cell lysate)

Western blot analysis of HeLa cell lysate with LTBR polyclonal antibody (Cat # PAB26889) at 1:500 dilution.

Specification

Product Description	Rabbit polyclonal antibody raised against synthetic peptide of LTBR.
Immunogen	A synthetic peptide corresponding to human LTBR.
Host	Rabbit
Theoretical MW (kDa)	~50.0
Reactivity	Human, Mouse
Specificity	LTBR polyclonal antibody detects endogenous levels of LTBR protein.
Form	Liquid
Purification	Affinity purification
Recommend Usage	Western Blot (1:500-1:1000) Immunofluorescence (1:50-1:200) The optimal working dilution should be determined by the end user.
Storage Buffer	In PBS, pH 7.2 (0.09% sodium azide)

Storage Instruction

Store at 4°C. For long term storage store at -20°C.
Aliquot to avoid repeated freezing and thawing.

Note

This product contains sodium azide: a POISONOUS AND HAZARDOUS SUBSTANCE which should be handled by trained staff only.

Applications

- Western Blot (Cell lysate)

Western blot analysis of HeLa cell lysate with LTBR polyclonal antibody (Cat # PAB26889) at 1:500 dilution.

- Immunofluorescence

Gene Info — LTBR

Entrez GeneID[4055](#)**Protein Accession#**[P36941](#)**Gene Name**

LTBR

Gene Alias

D12S370, LT-BETA-R, TNF-R-III, TNFCR, TNFR-RP, TNFR2-RP, TNFRSF3

Gene Description

lymphotoxin beta receptor (TNFR superfamily, member 3)

Omim ID[600979](#)**Gene Ontology**[Hyperlink](#)**Gene Summary**

The protein encoded by this gene is a member of the tumor necrosis factor (TNF) family of receptors. It is expressed on the surface of most cell types, including cells of epithelial and myeloid lineages, but not on T and B lymphocytes. The protein specifically binds the lymphotoxin membrane form (a complex of lymphotoxin-alpha and lymphotoxin-beta). The encoded protein and its ligand play a role in the development and organization of lymphoid tissue and transformed cells. Activation of the encoded protein can trigger apoptosis. [provided by RefSeq]

Other Designations

TNFR superfamily, member 3|lymphotoxin B receptor|lymphotoxin beta receptor|tumor necrosis factor C receptor|tumor necrosis factor receptor superfamily, member 3

Pathway

- [Cytokine-cytokine receptor interaction](#)

Disease

- [Birth Weight](#)
- [Genetic Predisposition to Disease](#)
- [Glioblastoma](#)
- [Glioma](#)
- [Hematologic Diseases](#)
- [Leukemia](#)
- [Meningeal Neoplasms](#)
- [Meningioma](#)
- [Multiple Myeloma](#)
- [Occupational Diseases](#)