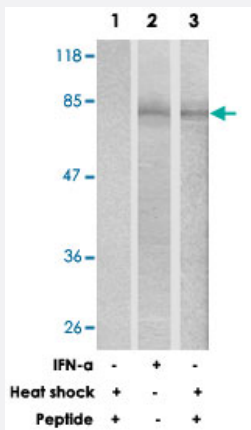


HSF1 polyclonal antibody

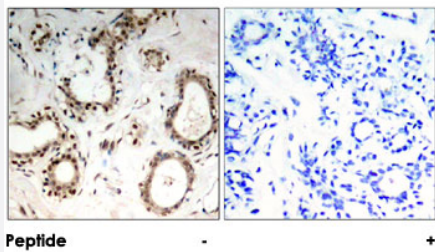
Catalog # PAB26756 Size 100 ug

Applications



Western Blot (Cell lysate)

Western blot analysis of extracts from HeLa cells treated with IFN or heat shock using HSF1 polyclonal antibody (Cat # PAB26756).



Immunohistochemistry (Formalin/PFA-fixed paraffin-embedded sections)

Immunohistochemical analysis of paraffin-embedded human breast carcinoma tissue using HSF1 polyclonal antibody (Cat # PAB26756).

Specification

Product Description	Rabbit polyclonal antibody raised against synthetic peptide of HSF1.
Immunogen	A synthetic peptide corresponding to residues surrounding S307 of human HSF1.
Sequence	P-Q-Sp-P-R
Host	Rabbit
Theoretical MW (kDa)	82

Reactivity	Human
Form	Liquid
Purification	Affinity chromatography
Concentration	1 mg/mL
Recommend Usage	Western Blot (1:500-1:1000) Immunohistochemistry (1:50-1:100) The optimal working dilution should be determined by the end user.
Storage Buffer	In PBS, 150 mM NaCl, pH 7.4 (50% glycerol, 0.02% sodium azide)
Storage Instruction	Store at -20°C. Aliquot to avoid repeated freezing and thawing.
Note	This product contains sodium azide: a POISONOUS AND HAZARDOUS SUBSTANCE which should be handled by trained staff only.

Applications

- Western Blot (Cell lysate)

Western blot analysis of extracts from HeLa cells treated with IFN or heat shock using HSF1 polyclonal antibody (Cat # PAB26756).

- Immunohistochemistry (Formalin/PFA-fixed paraffin-embedded sections)

Immunohistochemical analysis of paraffin-embedded human breast carcinoma tissue using HSF1 polyclonal antibody (Cat # PAB26756).

Gene Info — HSF1

Entrez GeneID	3297
Protein Accession#	Q00613
Gene Name	HSF1
Gene Alias	HSTF1
Gene Description	heat shock transcription factor 1
Omim ID	140580
Gene Ontology	Hyperlink

Gene Summary

The product of this gene is a heat-shock transcription factor. Transcription of heat-shock genes is rapidly induced after temperature stress. Hsp90, by itself and/or associated with multichaperone complexes, is a major repressor of this gene. [provided by RefSeq]

Other Designations

-