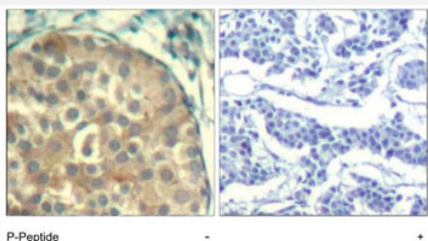


# CFL1/CFL2 (phospho Y88) polyclonal antibody

Catalog # PAB25901      Size 100 ug

## Applications



### Immunohistochemistry (Formalin/PFA-fixed paraffin-embedded sections)

Immunohistochemical analysis of paraffin-embedded human breast carcinoma tissue using CFL1/CFL2 (phospho Y88) polyclonal antibody (Cat # PAB25901).

## Specification

<b>Product Description</b>	Rabbit polyclonal antibody raised against synthetic phosphopeptide of CFL1/CFL2.
<b>Immunogen</b>	Synthetic phosphopeptide corresponding to residues surrounding Y88 of human CFL1/CFL2.
<b>Sequence</b>	A-T-Yp-E-T
<b>Host</b>	Rabbit
<b>Theoretical MW (kDa)</b>	19
<b>Reactivity</b>	Human, Mouse, Rat
<b>Form</b>	Liquid
<b>Purification</b>	Affinity chromatography
<b>Concentration</b>	1 mg/mL
<b>Recommend Usage</b>	Immunohistochemistry (1:50-1:100) The optimal working dilution should be determined by the end user.
<b>Storage Buffer</b>	In PBS (without $Mg^{2+}$ and $Ca^{2+}$ ), 150 mM NaCl, pH 7.4 (50% glycerol, 0.02% sodium azide)

**Storage Instruction**

Store at -20°C.  
Aliquot to avoid repeated freezing and thawing.

**Note**

This product contains sodium azide: a POISONOUS AND HAZARDOUS SUBSTANCE which should be handled by trained staff only.

## Applications

- Immunohistochemistry (Formalin/PFA-fixed paraffin-embedded sections)

Immunohistochemical analysis of paraffin-embedded human breast carcinoma tissue using CFL1/CFL2 (phospho Y88) polyclonal antibody (Cat # PAB25901).

## Gene Info — CFL1

**Entrez GeneID** [1072](#)

**Protein Accession#** [P23528 \(Gene ID : 1072\);Q9Y281 \(Gene ID : 1073\)](#)

**Gene Name** CFL1

**Gene Alias** CFL

**Gene Description** cofilin 1 (non-muscle)

**Omim ID** [601442](#)

**Gene Ontology** [Hyperlink](#)

**Gene Summary** Cofilin is a widely distributed intracellular actin-modulating protein that binds and depolymerizes filamentous F-actin and inhibits the polymerization of monomeric G-actin in a pH-dependent manner. It is involved in the translocation of actin-cofilin complex from cytoplasm to nucleus.[supplied by OMIM]

**Other Designations** -

## Gene Info — CFL2

**Entrez GeneID** [1073](#)

**Protein Accession#** [P23528 \(Gene ID : 1072\);Q9Y281 \(Gene ID : 1073\)](#)

**Gene Name** CFL2

**Gene Alias** NEM7

Gene Description	cofilin 2 (muscle)
Omim ID	<a href="#">601443 610687</a>
Gene Ontology	<a href="#">Hyperlink</a>
Gene Summary	This gene encodes an intracellular protein that is involved in the regulation of actin-filament dynamics. This protein is a major component of intranuclear and cytoplasmic actin rods. It can bind G- and F-actin in a 1:1 ratio of cofilin to actin, and it reversibly controls actin polymerization and depolymerization in a pH-dependent manner. Mutations in this gene cause nemaline myopathy type 7, a form of congenital myopathy. Alternative splicing results in multiple transcript variants. [provided by RefSeq]
Other Designations	cofilin 2

## Pathway

- [Axon guidance](#)
- [Axon guidance](#)
- [Fc gamma R-mediated phagocytosis](#)
- [Fc gamma R-mediated phagocytosis](#)
- [Regulation of actin cytoskeleton](#)
- [Regulation of actin cytoskeleton](#)

## Disease

- [Spinal Dysraphism](#)