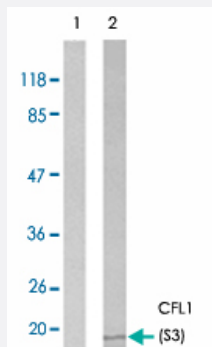


CFL1 (phospho S3) polyclonal antibody

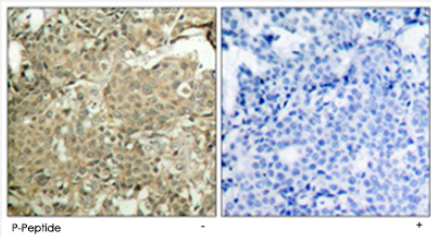
Catalog # PAB25817 Size 100 ug

Applications



Western Blot (Cell lysate)

Western blot analysis of extracts from COLO205 cell using CFL1 (phospho S3) polyclonal antibody (Cat # PAB25817).



Immunohistochemistry (Formalin/PFA-fixed paraffin-embedded sections)

Immunohistochemical analysis of paraffin-embedded human breast carcinoma tissue using CFL1 (phospho S3) polyclonal antibody (Cat # PAB25817).

Specification

Product Description	Rabbit polyclonal antibody raised against synthetic phosphopeptide of CFL1.
Immunogen	Synthetic phosphopeptide corresponding to residues surrounding S3 of human CFL1.
Sequence	M-A-Sp-G-V
Host	Rabbit
Theoretical MW (kDa)	19
Reactivity	Human, Mouse, Rat
Form	Liquid

Purification	Affinity chromatography
Concentration	1 mg/mL
Recommend Usage	Immunohistochemistry (1:50-1:100) Western Blot (1:500-1:1000) The optimal working dilution should be determined by the end user.
Storage Buffer	In PBS (without Mg ²⁺ and Ca ²⁺), 150 mM NaCl, pH 7.4 (50% glycerol, 0.02% sodium azide)
Storage Instruction	Store at -20°C. Aliquot to avoid repeated freezing and thawing.
Note	This product contains sodium azide: a POISONOUS AND HAZARDOUS SUBSTANCE which should be handled by trained staff only.

Applications

- Western Blot (Cell lysate)

Western blot analysis of extracts from COLO205 cell using CFL1 (phospho S3) polyclonal antibody (Cat # PAB25817).

- Immunohistochemistry (Formalin/PFA-fixed paraffin-embedded sections)

Immunohistochemical analysis of paraffin-embedded human breast carcinoma tissue using CFL1 (phospho S3) polyclonal antibody (Cat # PAB25817).

Gene Info — CFL1

Entrez GeneID	1072
Protein Accession#	P23528
Gene Name	CFL1
Gene Alias	CFL
Gene Description	cofilin 1 (non-muscle)
Omim ID	601442
Gene Ontology	Hyperlink

Gene Summary

Cofilin is a widely distributed intracellular actin-modulating protein that binds and depolymerizes filamentous F-actin and inhibits the polymerization of monomeric G-actin in a pH-dependent manner. It is involved in the translocation of actin-cofilin complex from cytoplasm to nucleus.[supplied by OMIM]

Other Designations

-

Pathway

- [Axon guidance](#)
- [Fc gamma R-mediated phagocytosis](#)
- [Regulation of actin cytoskeleton](#)

Disease

- [Spinal Dysraphism](#)