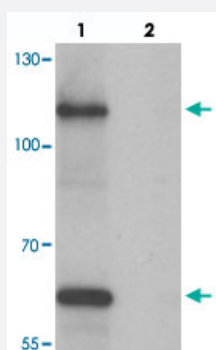


SIK3 polyclonal antibody

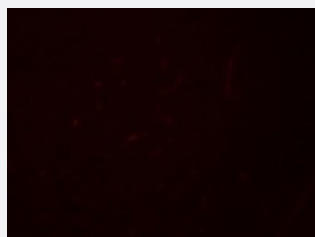
Catalog # PAB25753 Size 100 ug

Applications



Western Blot (Tissue lysate)

Western blot analysis of SIK3 in rat brain tissue with SIK3 polyclonal antibody (Cat # PAB25753) at 1 ug/mL in (lane 1) the absence and (lane 2) the presence of blocking peptide.



Immunofluorescence

Immunofluorescence analysis of SIK3 in rat brain with SIK3 polyclonal antibody (Cat # PAB25753) at 20 ug/mL.

Specification

Product Description	Chicken polyclonal antibody raised against synthetic peptide of SIK3.
Immunogen	A synthetic peptide corresponding to 18 amino acids at C-terminus of human SIK3.
Host	Chicken
Reactivity	Human, Mouse, Rat
Specificity	At least three isoforms of SIK3 are known to exist; this antibody will detect two isoforms. SIK3 antibody is predicted to not cross-react with SIK1 and SIK2.
Form	Liquid

Purification	Peptide affinity purification
Concentration	1 mg/mL
Isotype	IgY
Recommend Usage	Western Blot (1 ug/mL) Immunofluorescence (20 ug/mL) The optimal working dilution should be determined by the end user.
Storage Buffer	In PBS (0.02% sodium azide)
Storage Instruction	Store at 4°C for three months. For long term storage store at -20°C. Aliquot to avoid repeated freezing and thawing.
Note	This product contains sodium azide: a POISONOUS AND HAZARDOUS SUBSTANCE which should be handled by trained staff only.

Applications

- Western Blot (Tissue lysate)

Western blot analysis of SIK3 in rat brain tissue with SIK3 polyclonal antibody (Cat # PAB25753) at 1 ug/mL in (lane 1) the absence and (lane 2) the presence of blocking peptide.

- Immunofluorescence

Immunofluorescence analysis of SIK3 in rat brain with SIK3 polyclonal antibody (Cat # PAB25753) at 20 ug/mL.

- Enzyme-linked Immunoabsorbent Assay

Gene Info — SIK3

Entrez GeneID	23387
Protein Accession#	NP_079440
Gene Name	SIK3
Gene Alias	QSK, L19, SIK-3
Gene Description	SIK family kinase 3
Gene Ontology	Hyperlink
Other Designations	salt-inducible kinase 3 serine/threonine-protein kinase QSK serine/threonine-protein kinase SIK3

Disease

- [Adenocarcinoma](#)
- [Genetic Predisposition to Disease](#)
- [Pancreatic Neoplasms](#)
- [Tobacco Use Disorder](#)