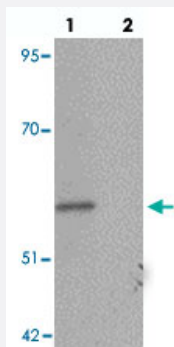


ESRRB polyclonal antibody

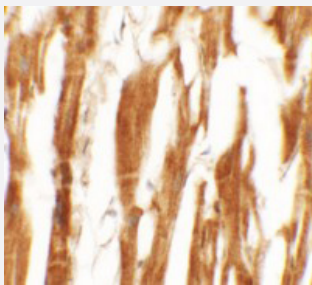
Catalog # PAB25698 Size 100 ug

Applications



Western Blot (Tissue lysate)

Western blot analysis of ESRRB in human heart tissue with ESRRB polyclonal antibody (Cat # PAB25698) at 1 ug/mL in (1) the absence and (2) the presence of blocking peptide.



Immunohistochemistry

Immunohistochemical analysis of ESRRB in human heart tissue with ESRRB polyclonal antibody (Cat # PAB25698) at 5 ug/mL.

Specification

Product Description	Rabbit polyclonal antibody raised against synthetic peptide of ESRRB.
Immunogen	A synthetic peptide corresponding to 19 amino acids at C-terminus of human ESRRB.
Host	Rabbit
Reactivity	Human
Form	Liquid
Purification	Peptide affinity purification
Concentration	1 mg/mL

Isotype	IgG
Recommend Usage	Western Blot (1 ug/mL) Immunohistochemistry (5 ug/mL) The optimal working dilution should be determined by the end user.
Storage Buffer	In PBS (0.05% sodium azide)
Storage Instruction	Store at 4°C for three months. For long term storage store at -20°C. Aliquot to avoid repeated freezing and thawing.
Note	This product contains sodium azide: a POISONOUS AND HAZARDOUS SUBSTANCE which should be handled by trained staff only.

Applications

- Western Blot (Tissue lysate)

Western blot analysis of ESRRB in human heart tissue with ESRRB polyclonal antibody (Cat # PAB25698) at 1 ug/mL in (1) the absence and (2) the presence of blocking peptide.

- Immunohistochemistry

Immunohistochemical analysis of ESRRB in human heart tissue with ESRRB polyclonal antibody (Cat # PAB25698) at 5 ug/mL.

- Enzyme-linked Immunoabsorbent Assay

Gene Info — ESRRB

Entrez GeneID	2103
Protein Accession#	NP_004443
Gene Name	ESRRB
Gene Alias	DFNB35, ERR2, ERRb, ERRbeta, ERRbeta-2, ESRL2, NR3B2
Gene Description	estrogen-related receptor beta
Omim ID	602167
Gene Ontology	Hyperlink
Gene Summary	This gene encodes a protein with similarity to the estrogen receptor. Its function is unknown; however, a similar protein in mouse plays an essential role in placental development. [provided by RefSeq]

Other Designations

estrogen receptor-like 2|nuclear receptor ERRB2|orphan nuclear receptor|steroid hormone recept
or ERR2

Disease

- [Cleft Lip](#)
- [Cleft Palate](#)
- [Genetic Predisposition to Disease](#)
- [Neoplasm Invasiveness](#)
- [Prostatic Neoplasms](#)
- [Tobacco Use Disorder](#)