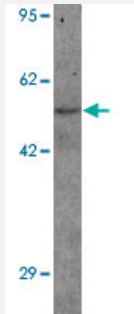


PANX1 polyclonal antibody

Catalog # PAB25673

Size 100 ug

Applications



Western Blot (Tissue lysate)

Western blot analysis of PANX1 in human ovary tissue with PANX1 polyclonal antibody (Cat # PAB25673) at 1 ug/mL.

Specification

Product Description	Rabbit polyclonal antibody raised against synthetic peptide of PANX1.
Immunogen	A synthetic peptide corresponding to 17 amino acids at N-terminus of human PANX1.
Host	Rabbit
Theoretical MW (kDa)	47
Reactivity	Human, Mouse, Rat
Specificity	Two transcript variants encoding different isoforms have been found for this gene.
Form	Liquid
Purification	Peptide affinity purification
Concentration	1 mg/mL
Isotype	IgG
Recommend Usage	Western Blot (1-2 ug/mL) The optimal working dilution should be determined by the end user.

Storage Buffer	In PBS (0.05% sodium azide)
Storage Instruction	Store at 4°C for three months. For long term storage store at -20°C. Aliquot to avoid repeated freezing and thawing.
Note	This product contains sodium azide: a POISONOUS AND HAZARDOUS SUBSTANCE which should be handled by trained staff only.

Applications

- Western Blot (Tissue lysate)

Western blot analysis of PANX1 in human ovary tissue with PANX1 polyclonal antibody (Cat # PAB25673) at 1 ug/mL.

- Enzyme-linked Immunoabsorbent Assay

Gene Info — PANX1

Entrez GeneID	24145
Protein Accession#	NP_056183
Gene Name	PANX1
Gene Alias	MGC21309, MRS1, PX1, UNQ2529
Gene Description	pannexin 1
Omim ID	608420
Gene Ontology	Hyperlink
Gene Summary	The protein encoded by this gene belongs to the innexin family. Innexin family members are the structural components of gap junctions. This protein and pannexin 2 are abundantly expressed in central nerve system (CNS) and are coexpressed in various neuronal populations. Studies in Xenopus oocytes suggest that this protein alone and in combination with pannexin 2 may form cell type-specific gap junctions with distinct properties. [provided by RefSeq]
Other Designations	innexin

Disease

- [Genetic Predisposition to Disease](#)

- [Ovarian Neoplasms](#)