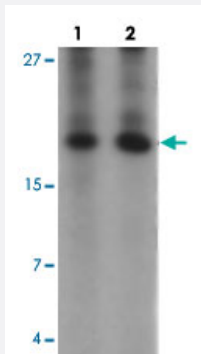


# ANG polyclonal antibody

Catalog # PAB25645      Size 100 ug

## Applications



### Western Blot (Tissue lysate)

Western blot analysis of ANG in rat liver tissue with ANG polyclonal antibody (Cat # PAB25645) at (1) 1 and (2) 2 ug/mL.

## Specification

<b>Product Description</b>	Rabbit polyclonal antibody raised against synthetic peptide of ANG.
<b>Immunogen</b>	A synthetic peptide corresponding to 15 amino acids at internal region of human ANG.
<b>Host</b>	Rabbit
<b>Theoretical MW (kDa)</b>	16
<b>Reactivity</b>	Human, Mouse, Rat
<b>Specificity</b>	Two alternatively spliced transcript variants have been observed.
<b>Form</b>	Liquid
<b>Purification</b>	Peptide affinity purification
<b>Concentration</b>	1 mg/mL
<b>Isotype</b>	IgG
<b>Recommend Usage</b>	Western Blot (1-2 ug/mL) The optimal working dilution should be determined by the end user.

<b>Storage Buffer</b>	In PBS (0.05% sodium azide)
<b>Storage Instruction</b>	Store at 4°C for three months. For long term storage store at -20°C. Aliquot to avoid repeated freezing and thawing.
<b>Note</b>	This product contains sodium azide: a POISONOUS AND HAZARDOUS SUBSTANCE which should be handled by trained staff only.

## Applications

- Western Blot (Tissue lysate)

Western blot analysis of ANG in rat liver tissue with ANG polyclonal antibody (Cat # PAB25645) at (1) 1 and (2) 2 ug/mL.

- Enzyme-linked Immunoabsorbent Assay

## Gene Info — ANG

<b>Entrez GeneID</b>	<a href="#">283</a>
<b>Protein Accession#</b>	<a href="#">NP_001136</a>
<b>Gene Name</b>	ANG
<b>Gene Alias</b>	ALS9, HEL168, MGC22466, MGC71966, RNASE4, RNASE5
<b>Gene Description</b>	angiogenin, ribonuclease, RNase A family, 5
<b>Omim ID</b>	<a href="#">105400</a> <a href="#">105850</a>
<b>Gene Ontology</b>	<a href="#">Hyperlink</a>
<b>Gene Summary</b>	The protein encoded by this gene is an exceedingly potent mediator of new blood vessel formation. It hydrolyzes cellular tRNAs resulting in decreased protein synthesis and is similar to pancreatic ribonuclease. Alternative splicing results in two transcript variants encoding the same protein. This gene and the gene that encodes ribonuclease, RNase A family, 4 share promoters and 5' exons. Each gene splices to a unique downstream exon that contains its complete coding region. [provided by RefSeq]
<b>Other Designations</b>	OTTHUMP00000164020 OTTHUMP00000164021 epididymis luminal protein 168

## Disease

- [Amyotrophic lateral sclerosis](#)

- [Anoxia](#)
- [Chorioamnionitis](#)
- [Disease Susceptibility](#)
- [Fetal Membranes](#)
- [Genetic Predisposition to Disease](#)
- [Hypertension](#)
- [Hypertrophy](#)
- [Obstetric Labor](#)
- [Pre-Eclampsia](#)
- [Premature Birth](#)