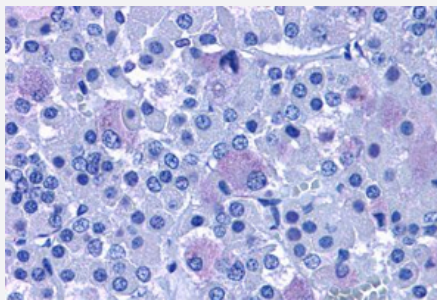


ADCYAP1R1 polyclonal antibody

Catalog # PAB25595

Size 50 ug

Applications



Immunohistochemistry (Formalin/PFA-fixed paraffin-embedded sections)

Immunohistochemical staining of formalin-fixed, paraffin-embedded human brain, pituitary tissue after heat-induced antigen retrieval.
Using ADCYAP1R1 polyclonal antibody (Cat # PAB25595).

Specification

Product Description	Rabbit polyclonal antibody raised against synthetic peptide of ADCYAP1R1.
Immunogen	A synthetic peptide corresponding to 17 amino acids at C-terminus of human ADCYAP1R1.
Host	Rabbit
Reactivity	Chicken, Dog, Human, Monkey
Specificity	BLAST analysis of the peptide immunogen showed no homology with other human proteins.
Form	Liquid
Purification	Immunoaffinity chromatography
Recommend Usage	Immunohistochemistry (Formalin/PFA-fixed paraffin-embedded sections) (15 ug/mL) The optimal working dilution should be determined by the end user.
Storage Buffer	In PBS (0.09% sodium azide)
Storage Instruction	Store at 4°C. For long term storage store at -80°C. Aliquot to avoid repeated freezing and thawing.

Note

This product contains sodium azide: a POISONOUS AND HAZARDOUS SUBSTANCE which should be handled by trained staff only.

Applications

- Immunohistochemistry (Formalin/PFA-fixed paraffin-embedded sections)

Immunohistochemical staining of formalin-fixed, paraffin-embedded human brain, pituitary tissue after heat-induced antigen retrieval.

Using ADCYAP1R1 polyclonal antibody (Cat # PAB25595).

Gene Info — ADCYAP1R1

Entrez GeneID [117](#)

Gene Name ADCYAP1R1

Gene Alias PAC1, PACAPR, PACAPRI

Gene Description adenylyl cyclase activating polypeptide 1 (pituitary) receptor type I

Omim ID [102981](#)

Gene Ontology [Hyperlink](#)

Gene Summary This gene encodes type I adenylyl cyclase activating polypeptide receptor, which is a membrane-associated protein and shares significant homology with members of the glucagon/secretin receptor family. This receptor mediates diverse biological actions of adenylyl cyclase activating polypeptide 1 and is positively coupled to adenylyl cyclase. Alternative splicing of two exons of this gene generates four major splice variants, but their full-length nature has not been determined. [provided by RefSeq]

Other Designations OTTHUMP00000025502|OTTHUMP00000123435|adenylyl cyclase activating polypeptide 1 (pituitary) receptor type I|pituitary adenylyl cyclase activating polypeptide 1 receptor type I Hiphop

Pathway

- [Neuroactive ligand-receptor interaction](#)

Disease

- [Asthma](#)

- [Genetic Predisposition to Disease](#)
- [Mental Disorders](#)