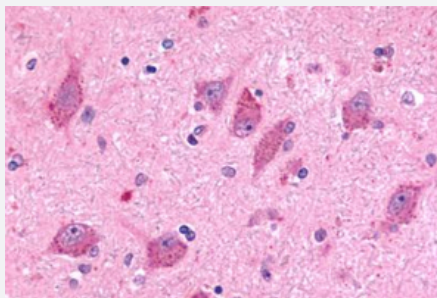


BAI2 polyclonal antibody

Catalog # PAB25540

Size 50 ug

Applications



Immunohistochemistry (Formalin/PFA-fixed paraffin-embedded sections)

Immunohistochemical staining of formalin-fixed, paraffin-embedded human brain, neurons and glia tissue after heat-induced antigen retrieval. Using BAI2 polyclonal antibody (Cat # PAB25540).

Specification

Product Description	Rabbit polyclonal antibody raised against synthetic peptide of BAI2.
Immunogen	A synthetic peptide corresponding to 19 amino acids at N-terminal extracellular domain of human BAI2.
Host	Rabbit
Reactivity	Human
Specificity	BLAST analysis of the peptide immunogen showed no homology with other human proteins.
Form	Liquid
Purification	Immunoaffinity chromatography
Recommend Usage	Immunohistochemistry (Formalin/PFA-fixed paraffin-embedded sections) (14-21 ug/mL) The optimal working dilution should be determined by the end user.
Storage Buffer	In PBS (0.09% sodium azide)
Storage Instruction	Store at 4°C. For long term storage store at -80°C. Aliquot to avoid repeated freezing and thawing.

Note

This product contains sodium azide: a POISONOUS AND HAZARDOUS SUBSTANCE which should be handled by trained staff only.

Applications

- Western Blot
- Immunohistochemistry (Formalin/PFA-fixed paraffin-embedded sections)

Immunohistochemical staining of formalin-fixed, paraffin-embedded human brain, neurons and glia tissue after heat-induced antigen retrieval.

Using BAI2 polyclonal antibody (Cat # PAB25540).

Gene Info — BAI2

Entrez GeneID	576
Gene Name	BAI2
Gene Alias	-
Gene Description	brain-specific angiogenesis inhibitor 2
Omim ID	602683
Gene Ontology	Hyperlink
Gene Summary	BAI1, a p53-target gene, encodes brain-specific angiogenesis inhibitor, a seven-span transmembrane protein and is thought to be a member of the secretin receptor family. Brain-specific angiogenesis proteins BAI2 and BAI3 are similar to BAI1 in structure, have similar tissue specificities and may also play a role in angiogenesis. [provided by RefSeq]
Other Designations	Brain-specific angiogenesis inhibitor-2

Disease

- [Genetic Predisposition to Disease](#)
- [Narcolepsy](#)