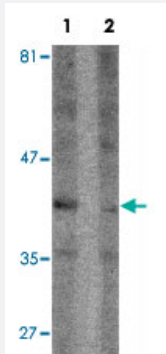


# SEPT1 polyclonal antibody

Catalog # PAB25477      Size 100 ug

## Applications



### Western Blot (Cell lysate)

Western blot analysis of Raji cell lysate with SEPT1 polyclonal antibody (Cat # PAB25477) at 1 ug/mL in (1) the absence and (2) the presence of blocking peptide.



### Immunocytochemistry

Immunocytochemical analysis of Raji cells with SEPT1 polyclonal antibody (Cat # PAB25477) at 5 ug/mL.

## Specification

<b>Product Description</b>	Rabbit polyclonal antibody raised against synthetic peptide of SEPT1.
<b>Immunogen</b>	A synthetic peptide corresponding to C-terminus of human SEPT1.
<b>Host</b>	Rabbit
<b>Reactivity</b>	Human, Mouse, Rat
<b>Specificity</b>	At least two isoforms of SEPT1 are known to exist. This antibody is predicted to not cross-react with other Septin protein family members.
<b>Form</b>	Liquid

Purification	Affinity purification
Concentration	1 mg/mL
Recommend Usage	Western Blot (1 ug/mL) Immunocytochemistry (5 ug/mL) The optimal working dilution should be determined by the end user.
Storage Buffer	In PBS (0.02% sodium azide)
Storage Instruction	Store at 4°C for three months. For long term storage store at -20°C. Aliquot to avoid repeated freezing and thawing.
Note	This product contains sodium azide: a POISONOUS AND HAZARDOUS SUBSTANCE which should be handled by trained staff only.

## Applications

- Western Blot (Cell lysate)

Western blot analysis of Raji cell lysate with SEPT1 polyclonal antibody (Cat # PAB25477) at 1 ug/mL in (1) the absence and (2) the presence of blocking peptide.

- Immunocytochemistry

Immunocytochemical analysis of Raji cells with SEPT1 polyclonal antibody (Cat # PAB25477) at 5 ug/mL.

- Enzyme-linked Immunoabsorbent Assay

## Gene Info — SEPT1

Entrez GeneID	<a href="#">1731</a>
Protein Accession#	<a href="#">NP_443070</a>
Gene Name	SEPT1
Gene Alias	DIFF6, LARP, MGC20394, PNUTL3, SEP1
Gene Description	sepin 1
Gene Ontology	<a href="#">Hyperlink</a>

**Gene Summary**

This gene is a member of the septin family of GTPases. Members of this family are required for cytokinesis. This gene encodes a protein associated with the tau-based paired helical filament core, and may contribute to the formation of neurofibrillary tangles in Alzheimer's disease. [provided by RefSeq]

**Other Designations**

differentiation 6 (deoxyguanosine triphosphate triphosphohydrolase)|serologically defined breast cancer antigen NY-BR-24