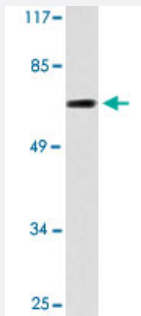


GBP1 polyclonal antibody

Catalog # PAB25097 Size 100 uL

Applications



Western Blot (Cell lysate)

Western blot analysis of HUVEC cell lysate with GBP1 polyclonal antibody (Cat # PAB25097).

Specification

Product Description	Rabbit polyclonal antibody raised against synthetic peptide of GBP1.
Immunogen	A synthetic peptide corresponding to GBP1.
Host	Rabbit
Theoretical MW (kDa)	68
Reactivity	Human
Specificity	GBP1 polyclonal antibody detects endogenous levels of GBP1 protein.
Form	Liquid
Purification	Affinity purification
Concentration	1 mg/mL
Recommend Usage	Western Blot (1:500-1:1000) Immunofluorescence (1:50-1:200) The optimal working dilution should be determined by the end user.
Storage Buffer	In PBS, pH 7.2 (0.05% sodium azide)

Storage Instruction

Store at 4°C. For long term storage store at -20°C.
Aliquot to avoid repeated freezing and thawing.

Note

This product contains sodium azide: a POISONOUS AND HAZARDOUS SUBSTANCE which should be handled by trained staff only.

Applications

- Western Blot (Cell lysate)

Western blot analysis of HUVEC cell lysate with GBP1 polyclonal antibody (Cat # PAB25097).

- Immunofluorescence

Gene Info — GBP1

Entrez GeneID[2633](#)**Gene Name**

GBP1

Gene Alias

-

Gene Description

guanylate binding protein 1, interferon-inducible, 67kDa

Omim ID[600411](#)**Gene Ontology**[Hyperlink](#)**Gene Summary**

Guanylate binding protein expression is induced by interferon. Guanylate binding proteins are characterized by their ability to specifically bind guanine nucleotides (GMP, GDP, and GTP) and are distinguished from the GTP-binding proteins by the presence of 2 binding motifs rather than 3. [provided by RefSeq]

Other Designations

OTTHUMP00000012352

Disease

- [Multiple Sclerosis](#)