

KIF20A polyclonal antibody

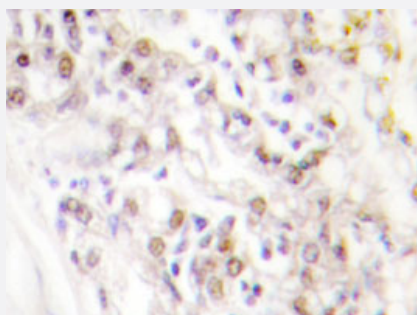
Catalog # PAB25094 Size 100 uL

Applications



Western Blot (Cell lysate)

Western blot analysis of 293 cell lysate with KIF20A polyclonal antibody (Cat # PAB25094).



Immunohistochemistry (Formalin/PFA-fixed paraffin-embedded sections)

Immunohistochemical analysis of paraffin-embedded human breast cancer tissue using KIF20A polyclonal antibody (Cat # PAB25094).

Specification

Product Description	Rabbit polyclonal antibody raised against synthetic peptide of KIF20A.
Immunogen	A synthetic peptide corresponding to KIF20A.
Host	Rabbit
Theoretical MW (kDa)	100
Reactivity	Human
Specificity	KIF20A polyclonal antibody detects endogenous levels of KIF20A protein.
Form	Liquid

Purification	Affinity purification
Concentration	1 mg/mL
Recommend Usage	Western Blot (1:500-1:1000) Immunohistochemistry (1:50-1:200) Immunofluorescence (1:50-1:200) The optimal working dilution should be determined by the end user.
Storage Buffer	In PBS, pH 7.2 (0.05% sodium azide)
Storage Instruction	Store at 4°C. For long term storage store at -20°C. Aliquot to avoid repeated freezing and thawing.
Note	This product contains sodium azide: a POISONOUS AND HAZARDOUS SUBSTANCE which should be handled by trained staff only.

Applications

- Western Blot (Cell lysate)

Western blot analysis of 293 cell lysate with KIF20A polyclonal antibody (Cat # PAB25094).

- Immunohistochemistry (Formalin/PFA-fixed paraffin-embedded sections)

Immunohistochemical analysis of paraffin-embedded human breast cancer tissue using KIF20A polyclonal antibody (Cat # PAB25094).

- Immunofluorescence

Gene Info — KIF20A

Entrez GeneID	10112
Gene Name	KIF20A
Gene Alias	FLJ21151, MKLP2, RAB6KIFL
Gene Description	kinesin family member 20A
Omim ID	605664
Gene Ontology	Hyperlink
Gene Summary	kinesin-like (rabkinesin6) mitotic kinesin-like protein 2

Other Designations

OTTHUMP00000159481|RAB6 interacting, kinesin-like (rabkinesin6)|mitotic kinesin-like protein
2
