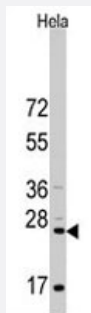


# CD8A polyclonal antibody

Catalog # PAB2495

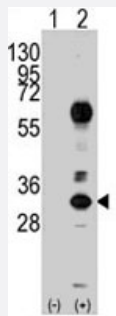
Size 400 uL

## Applications



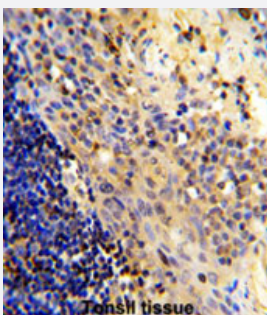
### Western Blot (Cell lysate)

Western blot analysis of CD8A polyclonal antibody (Cat # PAB2495) in HeLa cell line lysates (35 ug/lane). CD8A (arrow) was detected using the purified polyclonal antibody.



### Western Blot (Transfected lysate)

Western blot analysis of CD8A (arrow) using rabbit CD8A polyclonal antibody (Cat # PAB2495). 293 cell lysates (2 ug/lane) either nontransfected (Lane 1) or transiently transfected with the CD8A gene (Lane 2) (Origene Technologies).



### Immunohistochemistry (Formalin/PFA-fixed paraffin-embedded sections)

Formalin-fixed and paraffin-embedded human tonsil reacted with CD8A polyclonal antibody (Cat # PAB2495), which was peroxidase-conjugated to the secondary antibody, followed by AEC staining.

This data demonstrates the use of this antibody for immunohistochemistry; clinical relevance has not been evaluated.

## Specification

### Product Description

Rabbit polyclonal antibody raised against synthetic peptide of CD8A.

### Immunogen

A synthetic peptide (conjugated with KLH) corresponding to N-terminus of human CD8A.

Host	Rabbit
Reactivity	Human
Form	Liquid
Purification	Protein A purification
Recommend Usage	Western Blot (1:1000) The optimal working dilution should be determined by the end user.
Storage Buffer	In PBS (0.09% sodium azide)
Storage Instruction	Store at 4°C. For long term storage store at -20°C. Aliquot to avoid repeated freezing and thawing.
Note	This product contains sodium azide: a POISONOUS AND HAZARDOUS SUBSTANCE which should be handled by trained staff only.

## Applications

- Western Blot (Cell lysate)

Western blot analysis of CD8A polyclonal antibody (Cat # PAB2495) in HeLa cell line lysates (35 ug/lane). CD8A (arrow) was detected using the purified polyclonal antibody.

- Western Blot (Transfected lysate)

Western blot analysis of CD8A (arrow) using rabbit CD8A polyclonal antibody (Cat # PAB2495). 293 cell lysates (2 ug/lane) either nontransfected (Lane 1) or transiently transfected with the CD8A gene (Lane 2) (Origene Technologies).

- Immunohistochemistry (Formalin/PFA-fixed paraffin-embedded sections)

Formalin-fixed and paraffin-embedded human tonsil reacted with CD8A polyclonal antibody (Cat # PAB2495), which was peroxidase-conjugated to the secondary antibody, followed by AEC staining.

This data demonstrates the use of this antibody for immunohistochemistry; clinical relevance has not been evaluated.

## Gene Info — CD8A

Entrez GeneID	<a href="#">925</a>
Protein Accession#	<a href="#">NP_001759:P01732</a>
Gene Name	CD8A
Gene Alias	CD8, Leu2, MAL, p32
Gene Description	CD8a molecule

Omim ID [186910 608957](#)

Gene Ontology [Hyperlink](#)

**Gene Summary**

The CD8 antigen is a cell surface glycoprotein found on most cytotoxic T lymphocytes that mediates efficient cell-cell interactions within the immune system. The CD8 antigen acts as a coreceptor with the T-cell receptor on the T lymphocyte to recognize antigens displayed by an antigen presenting cell (APC) in the context of class I MHC molecules. The coreceptor functions as either a homodimer composed of two alpha chains, or as a heterodimer composed of one alpha and one beta chain. Both alpha and beta chains share significant homology to immunoglobulin variable light chains. This gene encodes the CD8 alpha chain isoforms. Multiple transcript variants encoding different isoforms have been found for this gene. [provided by RefSeq]

**Other Designations**

CD8 antigen alpha polypeptide|CD8 antigen, alpha polypeptide (p32)|Leu2 T-lymphocyte antigen|OKT8 T-cell antigen|T cell co-receptor|T-cell antigen Leu2|T-cell surface glycoprotein CD8 alpha chain|T-lymphocyte differentiation antigen T8/Leu-2|T8 T-cell ant

## Publication Reference

- [Generation of mouse models of lymphoid neoplasm using retroviral gene transduction of in vitro-induced germinal center B and T cells.](#)

Arita K, Maeda-Kasugai Y, Ohshima K, Tsuzuki S, Suguro-Katayama M, Karube K, Yoshida N, Sugiyama T, Seto M. Experimental Hematology 2013 Aug; 41(8):731.

Application: IHC-P, Mouse, Mouse spleens
- [CD8+FOXP3+T cells from renal transplant recipients in quiescence induce immunoglobulin-like transcripts-3 and -4 on dendritic cells from their respective donors.](#)

Zhou H, Wang ZD, Zhu X, You Y, Zou P. Transplantation Proceedings 2007 Dec; 39(10):3065.

Application: Flow Cyt, Human, PBMCs
- [CD8+ T cells contribute to macrophage accumulation and airspace enlargement following repeated irritant exposure.](#)

Borchers MT, Wesselkamper SC, Harris NL, Deshmukh H, Beckman E, Vitucci M, Tichelaar JW, Leikauf GD. Experimental and Molecular Pathology 2007 Dec; 83(3):301.

Application: IHC-Fr, Mouse, Lung
- [Gly111Ser mutation in CD8A gene causing CD8 immunodeficiency is found in Spanish Gypsies.](#)

Mancebo E, Moreno-Pelayo MA, Mencia A, de la Calle-Martin O, Allende LM, Sivadurai P, Kalaydjieva L, Bertranpetit J, Coto E, Calleja-Antolin S, Ruiz-Contreras J, Paz-Artal E. Molecular Immunology 2008 Jan; 45(2):479.

## Pathway

- [Antigen processing and presentation](#)
- [Cell adhesion molecules \(CAMs\)](#)
- [Hematopoietic cell lineage](#)
- [Primary immunodeficiency](#)
- [T cell receptor signaling pathway](#)