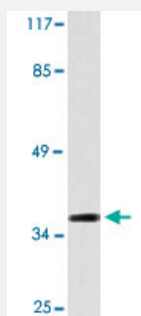


AHSA1 polyclonal antibody

Catalog # PAB24911 Size 100 uL

Applications



Western Blot (Cell lysate)

Western blot analysis of HT-29 cell lysate with AHSA1 polyclonal antibody (Cat # PAB24911).

Specification

Product Description	Rabbit polyclonal antibody raised against synthetic peptide of AHSA1.
Immunogen	A synthetic peptide corresponding to AHSA1.
Host	Rabbit
Theoretical MW (kDa)	38
Reactivity	Human
Specificity	AHSA1 polyclonal antibody detects endogenous levels of AHSA1 protein.
Form	Liquid
Purification	Antigen affinity purification
Concentration	1 mg/mL
Recommend Usage	Western Blot (1:500-1:1000) Immunohistochemistry (1:50-1:200) The optimal working dilution should be determined by the end user.
Storage Buffer	In PBS, pH 7.2 (0.05% sodium azide)

Storage Instruction

Store at 4°C. For long term storage store at -20°C.
Aliquot to avoid repeated freezing and thawing.

Note

This product contains sodium azide: a POISONOUS AND HAZARDOUS SUBSTANCE which should be handled by trained staff only.

Applications

- Western Blot (Cell lysate)

Western blot analysis of HT-29 cell lysate with AHSA1 polyclonal antibody (Cat # PAB24911).

- Immunohistochemistry

Gene Info — AHSA1

Entrez GeneID[10598](#)**Gene Name**

AHSA1

Gene Alias

AHA1, C14orf3, p38

Gene Description

AHA1, activator of heat shock 90kDa protein ATPase homolog 1 (yeast)

Omim ID[608466](#)**Gene Ontology**[Hyperlink](#)**Gene Summary**

O

Other Designations

AHA1, activator of heat shock 90kDa protein ATPase homolog 1