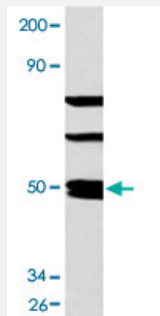


# SSB polyclonal antibody

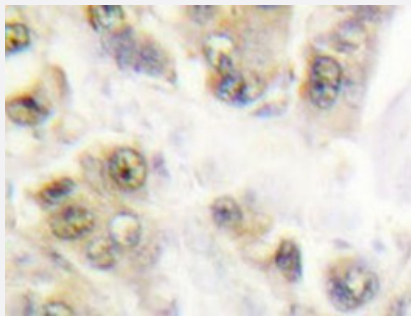
Catalog # PAB24863      Size 100 uL

## Applications



### Western Blot (Cell lysate)

Western blot analysis of HeLa cell lysate with SSB polyclonal antibody (Cat # PAB24863).



### Immunohistochemistry (Formalin/PFA-fixed paraffin-embedded sections)

Immunohistochemical analysis of paraffin-embedded human breast carcinoma tissue using SSB polyclonal antibody (Cat # PAB24863).

## Specification

<b>Product Description</b>	Rabbit polyclonal antibody raised against synthetic peptide of SSB.
<b>Immunogen</b>	A synthetic peptide corresponding to SSB.
<b>Host</b>	Rabbit
<b>Theoretical MW (kDa)</b>	~50.0
<b>Reactivity</b>	Human
<b>Specificity</b>	SSB polyclonal antibody detects endogenous levels of SSB protein.
<b>Form</b>	Liquid

Purification	Antigen affinity purification
Purity	> 95% by SDS-PAGE
Recommend Usage	Western Blot (1:500-1000) Immunohistochemistry (1:50-1:200) The optimal working dilution should be determined by the end user.
Storage Buffer	In 1x PBS, pH 7.2 (0.09% sodium azide)
Storage Instruction	Store at 4°C. For long term storage store at -20°C. Aliquot to avoid repeated freezing and thawing.
Note	This product contains sodium azide: a POISONOUS AND HAZARDOUS SUBSTANCE which should be handled by trained staff only.

## Applications

- Western Blot (Cell lysate)

Western blot analysis of HeLa cell lysate with SSB polyclonal antibody (Cat # PAB24863).

- Immunohistochemistry (Formalin/PFA-fixed paraffin-embedded sections)

Immunohistochemical analysis of paraffin-embedded human breast carcinoma tissue using SSB polyclonal antibody (Cat # PAB24863).

## Gene Info — SSB

Entrez GeneID	<a href="#">6741</a>
Gene Name	SSB
Gene Alias	LARP3, La
Gene Description	Sjogren syndrome antigen B (autoantigen La)
Omim ID	<a href="#">109090</a>
Gene Ontology	<a href="#">Hyperlink</a>
Gene Summary	La is involved in diverse aspects of RNA metabolism, including binding and protecting 3-prime UUU(OH) elements of newly RNA polymerase III (see MIM 606007)-transcribed RNA, processing 5-prime and 3-prime ends of pre-tRNA precursors, acting as an RNA chaperone, and binding viral RNAs associated with hepatitis C virus. La protein was originally defined by its reactivity with autoantibodies from patients with Sjogren syndrome (MIM 270150) and systemic lupus erythematosus (SLE; MIM 152700) (Teplova et al., 2006 [PubMed 16387655]).[supplied by OMIM]

**Other Designations**

La ribonucleoprotein domain family, member 3|SS-B/La protein|autoantigen La

**Pathway**

- [Systemic lupus erythematosus](#)

**Disease**

- [Disease Progression](#)
- [Disease Susceptibility](#)
- [HIV Infections](#)