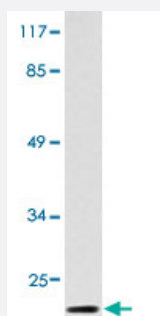


# CSTA polyclonal antibody

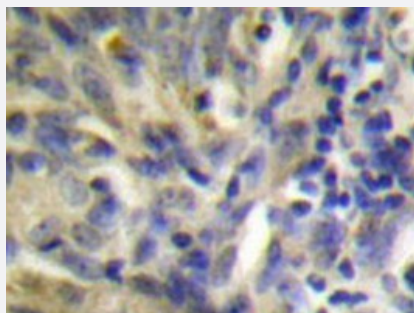
Catalog # PAB24853      Size 100 uL

## Applications



### Western Blot (Cell lysate)

Western blot analysis of HT-29 cell lysate with CSTA polyclonal antibody (Cat # PAB24853).



### Immunohistochemistry (Formalin/PFA-fixed paraffin-embedded sections)

Immunohistochemical analysis of paraffin-embedded human lung carcinoma tissue using CSTA polyclonal antibody (Cat # PAB24853).

## Specification

<b>Product Description</b>	Rabbit polyclonal antibody raised against synthetic peptide of CSTA.
<b>Immunogen</b>	A synthetic peptide corresponding to CSTA.
<b>Host</b>	Rabbit
<b>Theoretical MW (kDa)</b>	11
<b>Reactivity</b>	Human
<b>Specificity</b>	CSTA polyclonal antibody detects endogenous levels of CSTA protein.
<b>Form</b>	Liquid

Purification	Antigen affinity purification
Concentration	1 mg/mL
Purity	> 95% by SDS-PAGE
Recommend Usage	Western Blot (1:500-1:1000) Immunohistochemistry (1:50-1:200) Immunofluorescence (1:50-1:200) The optimal working dilution should be determined by the end user.
Storage Buffer	In 1x PBS, pH 7.2 (0.05% sodium azide)
Storage Instruction	Store at 4°C. For long term storage store at -20°C. Aliquot to avoid repeated freezing and thawing.
Note	This product contains sodium azide: a POISONOUS AND HAZARDOUS SUBSTANCE which should be handled by trained staff only.

## Applications

- Western Blot (Cell lysate)

Western blot analysis of HT-29 cell lysate with CSTA polyclonal antibody (Cat # PAB24853).

- Immunohistochemistry (Formalin/PFA-fixed paraffin-embedded sections)

Immunohistochemical analysis of paraffin-embedded human lung carcinoma tissue using CSTA polyclonal antibody (Cat # PAB24853).

- Immunofluorescence

## Gene Info — CSTA

Entrez GeneID	<a href="#">1475</a>
Gene Name	CSTA
Gene Alias	STF1, STFA
Gene Description	cystatin A (stefin A)
Omim ID	<a href="#">184600</a>
Gene Ontology	<a href="#">Hyperlink</a>

**Gene Summary**

The cystatin superfamily encompasses proteins that contain multiple cystatin-like sequences. Some of the members are active cysteine protease inhibitors, while others have lost or perhaps never acquired this inhibitory activity. There are three inhibitory families in the superfamily, including the type 1 cystatins (stefins), type 2 cystatins, and kininogens. This gene encodes a stefin that functions as a cysteine protease inhibitor, forming tight complexes with papain and the cathepsins B, H, and L. The protein is one of the precursor proteins of cornified cell envelope in keratinocytes and plays a role in epidermal development and maintenance. Stefins have been proposed as prognostic and diagnostic tools for cancer. [provided by RefSeq]

**Other Designations**

cystatin A|cystatin AS|stefin A

**Disease**

- [Genetic Predisposition to Disease](#)
- [Psoriasis](#)