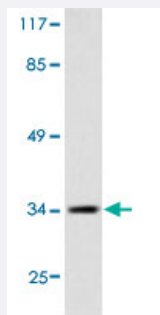


CEBPE polyclonal antibody

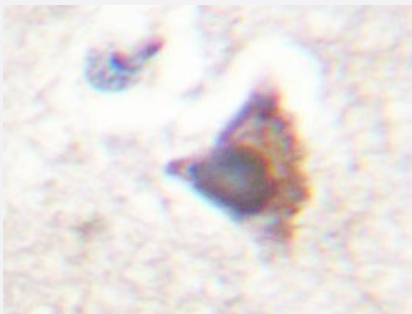
Catalog # PAB24839 Size 100 uL

Applications



Western Blot (Cell lysate)

Western blot analysis of HUVEC cell lysate (treated with Insulin 0.01U/ml 15min) with CEBPE polyclonal antibody (Cat # PAB24839).



Immunohistochemistry (Formalin/PFA-fixed paraffin-embedded sections)

Immunohistochemical analysis of paraffin-embedded human breast carcinoma tissue using CEBPE polyclonal antibody (Cat # PAB24839).

Specification

Product Description	Rabbit polyclonal antibody raised against synthetic peptide of CEBPE.
Immunogen	A synthetic peptide corresponding to CEBPE.
Host	Rabbit
Theoretical MW (kDa)	34
Reactivity	Human
Specificity	CEBPE polyclonal antibody detects endogenous levels of CEBPE protein.
Form	Liquid

Purification	Antigen affinity purification
Concentration	1 mg/mL
Purity	> 95% by SDS-PAGE
Recommend Usage	Western Blot (1:500-1:1000) Immunohistochemistry (1:50-1:200) Immunofluorescence (1:50-1:200) The optimal working dilution should be determined by the end user.
Storage Buffer	In 1x PBS, pH 7.2 (0.05% sodium azide)
Storage Instruction	Store at 4°C. For long term storage store at -20°C. Aliquot to avoid repeated freezing and thawing.
Note	This product contains sodium azide: a POISONOUS AND HAZARDOUS SUBSTANCE which should be handled by trained staff only.

Applications

- Western Blot (Cell lysate)

Western blot analysis of HUVEC cell lysate (treated with Insulin 0.01U/ml 15min) with CEBPE polyclonal antibody (Cat # PAB24839).

- Immunohistochemistry (Formalin/PFA-fixed paraffin-embedded sections)

Immunohistochemical analysis of paraffin-embedded human breast carcinoma tissue using CEBPE polyclonal antibody (Cat # PAB24839).

- Immunofluorescence

Gene Info — CEBPE

Entrez GeneID	1053
Gene Name	CEBPE
Gene Alias	C/EBP-epsilon, CRP1
Gene Description	CCAAT/enhancer binding protein (C/EBP), epsilon
Omim ID	245480 600749
Gene Ontology	Hyperlink

Gene Summary

The protein encoded by this gene is a bZIP transcription factor which can bind as a homodimer to certain DNA regulatory regions. It can also form heterodimers with the related protein CEBP-delta . The encoded protein may be essential for terminal differentiation and functional maturation of committed granulocyte progenitor cells. Mutations in this gene have been associated with Specific Granule Deficiency, a rare congenital disorder. Multiple variants of this gene have been described , but the full-length nature of only one has been determined. [provided by RefSeq

Other Designations

CCAAT/enhancer binding protein epsilon

Disease

- [Genetic Predisposition to Disease](#)
- [Precursor B-Cell Lymphoblastic Leukemia-Lymphoma](#)