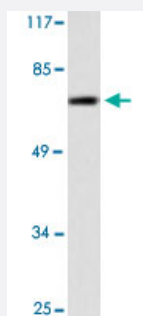


# ANXA6 polyclonal antibody

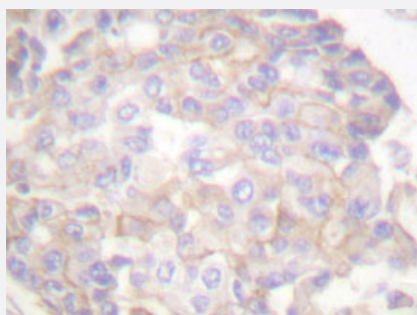
Catalog # PAB24796      Size 100 uL

## Applications



### Western Blot (Cell lysate)

Western blot analysis of 293 cell lysate with ANXA6 polyclonal antibody (Cat # PAB24796).



### Immunohistochemistry (Formalin/PFA-fixed paraffin-embedded sections)

Immunohistochemical analysis of paraffin-embedded human breast cancer tissue using ANXA6 polyclonal antibody (Cat # PAB24796).

## Specification

<b>Product Description</b>	Rabbit polyclonal antibody raised against synthetic peptide of ANXA6.
<b>Immunogen</b>	A synthetic peptide corresponding to ANXA6.
<b>Host</b>	Rabbit
<b>Theoretical MW (kDa)</b>	75
<b>Reactivity</b>	Human
<b>Specificity</b>	ANXA6 polyclonal antibody detects endogenous levels of ANXA6 protein.
<b>Form</b>	Liquid

<b>Purification</b>	Antigen affinity purification
<b>Concentration</b>	1 mg/mL
<b>Recommend Usage</b>	Western Blot (1:500-1:1000) Immunohistochemistry (1:50-1:200) Immunofluorescence (1:50-1:200) The optimal working dilution should be determined by the end user.
<b>Storage Buffer</b>	In PBS, pH 7.2 (0.05% sodium azide)
<b>Storage Instruction</b>	Store at 4°C. For long term storage store at -20°C. Aliquot to avoid repeated freezing and thawing.
<b>Note</b>	This product contains sodium azide: a POISONOUS AND HAZARDOUS SUBSTANCE which should be handled by trained staff only.

## Applications

- Western Blot (Cell lysate)

Western blot analysis of 293 cell lysate with ANXA6 polyclonal antibody (Cat # PAB24796).

- Immunohistochemistry (Formalin/PFA-fixed paraffin-embedded sections)

Immunohistochemical analysis of paraffin-embedded human breast cancer tissue using ANXA6 polyclonal antibody (Cat # PAB24796).

- Immunofluorescence

## Gene Info — ANXA6

<b>Entrez GeneID</b>	<a href="#">309</a>
<b>Gene Name</b>	ANXA6
<b>Gene Alias</b>	ANX6, CBP68
<b>Gene Description</b>	annexin A6
<b>Omim ID</b>	<a href="#">114070</a>
<b>Gene Ontology</b>	<a href="#">Hyperlink</a>

**Gene Summary**

Annexin VI belongs to a family of calcium-dependent membrane and phospholipid binding proteins. Although their functions are still not clearly defined, several members of the annexin family have been implicated in membrane-related events along exocytotic and endocytotic pathways. The annexin VI gene is approximately 60 kbp long and contains 26 exons. It encodes a protein of about 68 kDa that consists of eight 68-amino acid repeats separated by linking sequences of variable lengths. It is highly similar to human annexins I and II sequences, each of which contain four such repeats. Exon 21 of annexin VI is alternatively spliced, giving rise to two isoforms that differ by a 6-amino acid insertion at the start of the seventh repeat. Annexin VI has been implicated in mediating the endosome aggregation and vesicle fusion in secreting epithelia during exocytosis. [provided by RefSeq]

**Other Designations**

annexin VI|annexin VI (p68)|calcium-binding protein p68|calelectrin|calphobindin II

**Disease**

- [Femur Head Necrosis](#)
- [Genetic Predisposition to Disease](#)