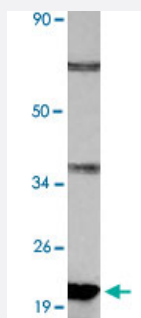


ABCC11 polyclonal antibody

Catalog # PAB24793 Size 100 uL

Applications



Western Blot (Cell lysate)

Western blot analysis of A-549 cell lysate with ABCC11 polyclonal antibody (Cat # PAB24793) at 1:500 dilution.

Specification

Product Description	Rabbit polyclonal antibody raised against synthetic peptide of ABCC11.
Immunogen	A synthetic peptide corresponding to ABCC11.
Host	Rabbit
Theoretical MW (kDa)	23
Reactivity	Human
Specificity	ABCC11 polyclonal antibody detects endogenous levels of ABCC11 protein.
Form	Liquid
Purification	Antigen affinity purification
Recommend Usage	Western Blot (1:500-1:1000) The optimal working dilution should be determined by the end user.
Storage Buffer	In PBS, pH 7.2 (0.09% sodium azide)
Storage Instruction	Store at 4°C. For long term storage store at -20°C. Aliquot to avoid repeated freezing and thawing.

Note

This product contains sodium azide: a POISONOUS AND HAZARDOUS SUBSTANCE which should be handled by trained staff only.

Applications

- Western Blot (Cell lysate)

Western blot analysis of A-549 cell lysate with ABCC11 polyclonal antibody (Cat # PAB24793) at 1:500 dilution.

Gene Info — ABCC11

Entrez GeneID [85320](#)

Gene Name ABCC11

Gene Alias EWWD, MRP8, WW

Gene Description ATP-binding cassette, sub-family C (CFTR/MRP), member 11

Omim ID [117800 607040](#)

Gene Ontology [Hyperlink](#)

Gene Summary

The protein encoded by this gene is a member of the superfamily of ATP-binding cassette (ABC) transporters. ABC proteins transport various molecules across extra- and intra-cellular membranes. ABC genes are divided into seven distinct subfamilies (ABC1, MDR/TAP, MRP, ALD, OABP, GCN20, White). This ABC full transporter is a member of the MRP subfamily which is involved in multi-drug resistance. The product of this gene participates in physiological processes involving bile acids, conjugated steroids, and cyclic nucleotides. In addition, a SNP in this gene is responsible for determination of human earwax type. This gene and family member ABCC12 are determined to be derived by duplication and are both localized to chromosome 16q12.1. Multiple alternatively spliced transcript variants have been described for this gene. [provided by RefSeq]

Other Designations ATP-binding cassette protein C11|ATP-binding cassette transporter MRP8|ATP-binding cassette, sub-family C, member 11|OTTHUMP00000164191|multi-resistance protein 8

Pathway

- [ABC transporters](#)

Disease

- [Ductus Arteriosus](#)
- [Genetic Predisposition to Disease](#)
- [Infant](#)
- [Sweat Gland Diseases](#)