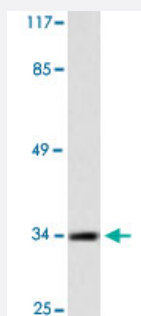


MAGEA1 polyclonal antibody

Catalog # PAB24765

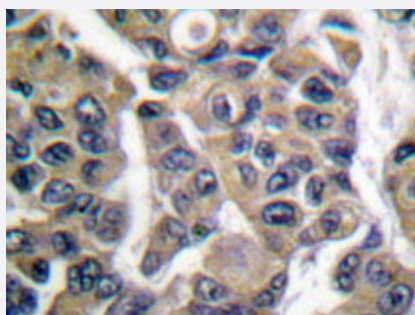
Size 100 uL

Applications



Western Blot (Cell lysate)

Western blot analysis of HepG2 cell lysate with MAGEA1 polyclonal antibody (Cat # PAB24765).



Immunohistochemistry (Formalin/PFA-fixed paraffin-embedded sections)

Immunohistochemical analysis of paraffin-embedded human breast cancer tissue using MAGEA1 polyclonal antibody (Cat # PAB24765).

Specification

Product Description	Rabbit polyclonal antibody raised against synthetic peptide of MAGEA1.
Immunogen	A synthetic peptide corresponding to MAGEA1.
Host	Rabbit
Theoretical MW (kDa)	34
Reactivity	Human
Specificity	MAGEA1 polyclonal antibody detects endogenous levels of MAGEA1 protein.
Form	Liquid

Purification	Antigen affinity purification
Concentration	1 mg/mL
Recommend Usage	Western Blot (1:500-1:1000) Immunohistochemistry (1:50-1:200) The optimal working dilution should be determined by the end user.
Storage Buffer	In PBS, pH 7.2 (0.05% sodium azide)
Storage Instruction	Store at 4°C. For long term storage store at -20°C. Aliquot to avoid repeated freezing and thawing.
Note	This product contains sodium azide: a POISONOUS AND HAZARDOUS SUBSTANCE which should be handled by trained staff only.

Applications

- Western Blot (Cell lysate)

Western blot analysis of HepG2 cell lysate with MAGEA1 polyclonal antibody (Cat # PAB24765).

- Immunohistochemistry (Formalin/PFA-fixed paraffin-embedded sections)

Immunohistochemical analysis of paraffin-embedded human breast cancer tissue using MAGEA1 polyclonal antibody (Cat # PAB24765).

Gene Info — MAGEA1

Entrez GeneID	4100
Gene Name	MAGEA1
Gene Alias	MAGE1, MGC9326
Gene Description	melanoma antigen family A, 1 (directs expression of antigen MZ2-E)
Omim ID	300016
Gene Ontology	Hyperlink
Gene Summary	This gene is a member of the MAGEA gene family. The members of this family encode proteins with 50 to 80% sequence identity to each other. The promoters and first exons of the MAGEA genes show considerable variability, suggesting that the existence of this gene family enables the same function to be expressed under different transcriptional controls. The MAGEA genes are clustered at chromosomal location Xq28. They have been implicated in some hereditary disorders, such as dyskeratosis congenita. [provided by RefSeq]

Other Designations

OTTHUMP00000025911|melanoma antigen MAGE-1|melanoma antigen family A 1|melanoma antigen family A, 1|melanoma-associated antigen 1|melanoma-associated antigen MZ2-E
