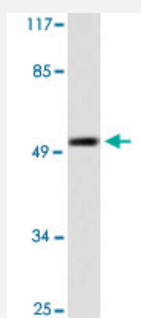


KRT7 polyclonal antibody

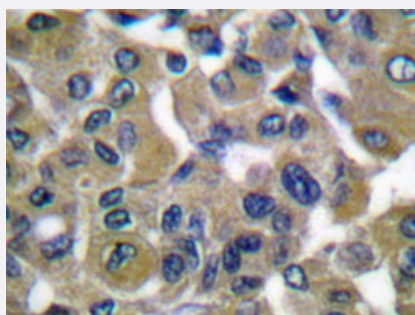
Catalog # PAB24763 Size 100 uL

Applications



Western Blot (Cell lysate)

Western blot analysis of HepG2 cell lysate with KRT7 polyclonal antibody (Cat # PAB24763).



Immunohistochemistry (Formalin/PFA-fixed paraffin-embedded sections)

Immunohistochemical analysis of paraffin-embedded human breast cancer tissue using KRT7 polyclonal antibody (Cat # PAB24763).

Specification

Product Description	Rabbit polyclonal antibody raised against synthetic peptide of KRT7.
Immunogen	A synthetic peptide corresponding to KRT7.
Host	Rabbit
Theoretical MW (kDa)	51
Reactivity	Human
Specificity	KRT7 polyclonal antibody detects endogenous levels of KRT7 protein.
Form	Liquid

Purification	Antigen affinity purification
Concentration	1 mg/mL
Recommend Usage	Western Blot (1:500-1:1000) Immunohistochemistry (1:50-1:200) Immunofluorescence (1:50-1:200) The optimal working dilution should be determined by the end user.
Storage Buffer	In PBS, pH 7.2 (0.05% sodium azide)
Storage Instruction	Store at 4°C. For long term storage store at -20°C. Aliquot to avoid repeated freezing and thawing.
Note	This product contains sodium azide: a POISONOUS AND HAZARDOUS SUBSTANCE which should be handled by trained staff only.

Applications

- Western Blot (Cell lysate)

Western blot analysis of HepG2 cell lysate with KRT7 polyclonal antibody (Cat # PAB24763).

- Immunohistochemistry (Formalin/PFA-fixed paraffin-embedded sections)

Immunohistochemical analysis of paraffin-embedded human breast cancer tissue using KRT7 polyclonal antibody (Cat # PAB24763).

- Immunofluorescence

Gene Info — KRT7

Entrez GeneID	3855
Gene Name	KRT7
Gene Alias	CK7, K2C7, K7, MGC129731, MGC3625, SCL
Gene Description	keratin 7
Omim ID	148059
Gene Ontology	Hyperlink

Gene Summary

The protein encoded by this gene is a member of the keratin gene family. The type II cytokeratins consist of basic or neutral proteins which are arranged in pairs of heterotypic keratin chains coexpressed during differentiation of simple and stratified epithelial tissues. This type II cytokeratin is specifically expressed in the simple epithelia lining the cavities of the internal organs and in the gland ducts and blood vessels. The genes encoding the type II cytokeratins are clustered in a region of chromosome 12q12-q13. Alternative splicing may result in several transcript variants; however, not all variants have been fully described. [provided by RefSeq]

Other Designations

cytokeratin 7|keratin, 55K type II cytoskeletal|keratin, simple epithelial type I, K7|keratin, type II cytoskeletal 7|sarcolectin|type II mesothelial keratin K7