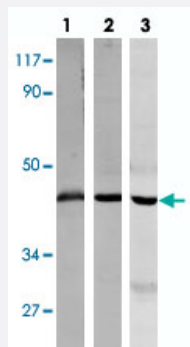


ACTB polyclonal antibody

Catalog # PAB24749 Size 100 uL

Applications



Western Blot

Western blot analysis of rat brain tissue lysate (lane 1), Raw 264.7 (lane 2) and HeLa (lane 3) cell lysate with ACTB polyclonal antibody (Cat # PAB24749).

Specification

Product Description	Rabbit polyclonal antibody raised against synthetic peptide of ACTB.
Immunogen	A synthetic peptide corresponding to ACTB.
Host	Rabbit
Theoretical MW (kDa)	45
Reactivity	Human, Mouse, Rat
Specificity	ACTB polyclonal antibody detects endogenous levels of ACTB protein.
Form	Liquid
Purification	Antigen affinity purification
Concentration	1 mg/mL
Recommend Usage	Western Blot (1:3000-1:10000) The optimal working dilution should be determined by the end user.
Storage Buffer	In PBS, pH 7.2 (0.05% sodium azide)

Storage Instruction

Store at 4°C. For long term storage store at -20°C.
Aliquot to avoid repeated freezing and thawing.

Note

This product contains sodium azide: a POISONOUS AND HAZARDOUS SUBSTANCE which should be handled by trained staff only.

Applications

- Western Blot

Western blot analysis of rat brain tissue lysate (lane 1), Raw 264.7 (lane 2) and HeLa (lane 3) cell lysate with ACTB polyclonal antibody (Cat # PAB24749).

Gene Info — ACTB

Entrez GeneID[60](#)**Gene Name**

ACTB

Gene Alias

PS1TP5BP1

Gene Description

actin, beta

Omim ID[102630](#)**Gene Ontology**[Hyperlink](#)**Gene Summary**

This gene encodes one of six different actin proteins. Actins are highly conserved proteins that are involved in cell motility, structure, and integrity. This actin is a major constituent of the contractile apparatus and one of the two nonmuscle cytoskeletal actins. [provided by RefSeq]

Other Designations

PS1TP5-binding protein 1|actin, cytoplasmic 1|beta actin|beta cytoskeletal actin

Pathway

- [Adherens junction](#)
- [Arrhythmogenic right ventricular cardiomyopathy \(ARVC\)](#)
- [Focal adhesion](#)
- [Hypertrophic cardiomyopathy \(HCM\)](#)
- [Leukocyte transendothelial migration](#)

- [Pathogenic Escherichia coli infection - EHEC](#)
- [Regulation of actin cytoskeleton](#)
- [Tight junction](#)
- [Vibrio cholerae infection](#)

Disease

- [Breast cancer](#)
- [Breast Neoplasms](#)