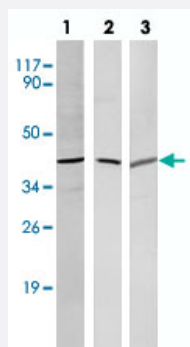


# SOX2 polyclonal antibody

Catalog # PAB24743      Size 100 uL

## Applications



### Western Blot

Western blot analysis of 293A cell lysate (lane 1), mouse brain (lane 2) and rat liver (lane 3) tissue lysate with SOX2 polyclonal antibody (Cat # PAB24743) at 1:5000 dilution.

## Specification

<b>Product Description</b>	Rabbit polyclonal antibody raised against synthetic peptide of SOX2.
<b>Immunogen</b>	A synthetic peptide corresponding to SOX2.
<b>Host</b>	Rabbit
<b>Theoretical MW (kDa)</b>	43
<b>Reactivity</b>	Human, Mouse, Rat
<b>Specificity</b>	SOX2 polyclonal antibody detects endogenous levels of SOX2 protein.
<b>Form</b>	Liquid
<b>Purification</b>	Antigen affinity purification
<b>Concentration</b>	1 mg/mL
<b>Recommend Usage</b>	Western Blot (1:1000-1:5000) The optimal working dilution should be determined by the end user.
<b>Storage Buffer</b>	In PBS, pH 7.2 (0.05% sodium azide)

**Storage Instruction**

Store at 4°C. For long term storage store at -20°C.  
Aliquot to avoid repeated freezing and thawing.

**Note**

This product contains sodium azide: a POISONOUS AND HAZARDOUS SUBSTANCE which should be handled by trained staff only.

## Applications

- Western Blot

Western blot analysis of 293A cell lysate (lane 1), mouse brain (lane 2) and rat liver (lane 3) tissue lysate with SOX2 polyclonal antibody (Cat # PAB24743) at 1:5000 dilution.

## Gene Info — SOX2

**Entrez GeneID**[6657](#)**Gene Name**

SOX2

**Gene Alias**

ANOP3, MCOPS3, MGC2413

**Gene Description**

SRY (sex determining region Y)-box 2

**Omim ID**[184429](#) [206900](#)**Gene Ontology**[Hyperlink](#)**Gene Summary**

This intronless gene encodes a member of the SRY-related HMG-box (SOX) family of transcription factors involved in the regulation of embryonic development and in the determination of cell fate. The product of this gene is required for stem-cell maintenance in the central nervous system, and also regulates gene expression in the stomach. Mutations in this gene have been associated with optic nerve hypoplasia and with syndromic microphthalmia, a severe form of structural eye malformation. This gene lies within an intron of another gene called SOX2 overlapping transcript (SOX2 OT). [provided by RefSeq]

**Other Designations**

SRY-related HMG-box gene 2|sex-determining region Y-box 2|transcription factor SOX2

## Disease

- [Anophthalmos](#)
- [Coloboma](#)
- [Diabetes Mellitus](#)

- [Diabetic Nephropathies](#)
- [Genetic Predisposition to Disease](#)
- [Kidney Failure](#)
- [Microphthalmos](#)
- [Myopia](#)