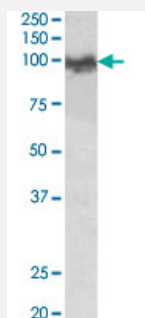


App polyclonal antibody

Catalog # PAB24627 Size 100 ug

Applications



Western Blot (Tissue lysate)

App polyclonal antibody (Cat # PAB24627) (0.03 ug/mL) staining of mouse brain lysate (35 ug protein in RIPA buffer). Primary incubation was 1 hour. Detected by chemiluminescence.

Specification

Product Description	Goat polyclonal antibody raised against synthetic peptide of App.
Immunogen	A synthetic peptide corresponding to N-terminus of mouse App.
Sequence	DAEFGHDSGFVHRHQQK
Host	Goat
Theoretical MW (kDa)	100
Reactivity	Mouse, Rat
Specificity	This antibody is expected to recognize all reported isoforms of mAPP (NP_001185752.1; NP_031497.2; NP_001185753.1; NP_001185754.1; NP_001185755.1) and to recognize all lengths of the putative mouse Amyloid beta peptide.
Form	Liquid
Purification	Antigen affinity purification
Recommend Usage	ELISA (1:64000) Western Blot (0.03-0.1 ug/mL) The optimal working dilution should be determined by the end user.

Storage Buffer	In 0.5 mg/mL Tris saline, pH 7.3 (0.02% sodium azide, 0.5% BSA)
Storage Instruction	Store at -20°C. Aliquot to avoid repeated freezing and thawing.
Note	This product contains sodium azide: a POISONOUS AND HAZARDOUS SUBSTANCE which should be handled by trained staff only.

Applications

- Western Blot (Tissue lysate)

App polyclonal antibody (Cat # PAB24627) (0.03 ug/mL) staining of mouse brain lysate (35 ug protein in RIPA buffer). Primary incubation was 1 hour. Detected by chemiluminescence.

- Enzyme-linked Immunoabsorbent Assay

Gene Info — App

Entrez GeneID	11820
Protein Accession#	NP_001185752.1 ; NP_031497.2 ; NP_001185753.1 ; NP_001185754.1 ; NP_001185755.1
Gene Name	App
Gene Alias	AL024401, Abeta, Adap, Cvap, E030013M08Rik, appican, betaAPP
Gene Description	amyloid beta (A4) precursor protein
Gene Ontology	Hyperlink
Other Designations	protease nexin II