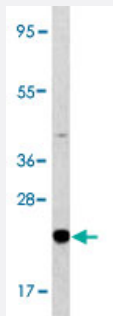


# BAD polyclonal antibody

Catalog # PAB2447

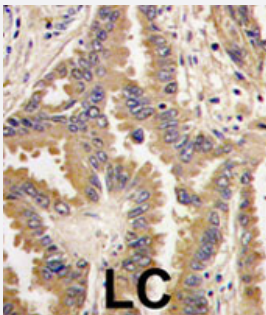
Size 400 uL

## Applications



### Western Blot (Cell lysate)

Western blot analysis of BAD polyclonal antibody (Cat # PAB2447) in HL-60 cell line lysates (35 ug/lane). BAD (arrow) was detected using the purified polyclonal antibody.



### Immunohistochemistry (Formalin/PFA-fixed paraffin-embedded sections)

Formalin-fixed and paraffin-embedded human lung carcinoma tissue reacted with BAD polyclonal antibody (Cat # PAB2447), which was peroxidase-conjugated to the secondary antibody, followed by DAB staining. This data demonstrates the use of this antibody for immunohistochemistry; clinical relevance has not been evaluated.

## Specification

Product Description	Rabbit polyclonal antibody raised against synthetic peptide of BAD.
Immunogen	A synthetic peptide (conjugated with KLH) corresponding to internal region of human BAD.
Host	Rabbit
Reactivity	Human
Form	Liquid
Purification	Protein A purification

<b>Recommend Usage</b>	Western Blot (1:1000) Immunohistochemistry (1:10-50) The optimal working dilution should be determined by the end user.
<b>Storage Buffer</b>	In PBS (0.09% sodium azide)
<b>Storage Instruction</b>	Store at 4°C. For long term storage store at -20°C. Aliquot to avoid repeated freezing and thawing.
<b>Note</b>	This product contains sodium azide: a POISONOUS AND HAZARDOUS SUBSTANCE which should be handled by trained staff only.

## Applications

- Western Blot (Cell lysate)

Western blot analysis of BAD polyclonal antibody (Cat # PAB2447) in HL-60 cell line lysates (35 ug/lane). BAD (arrow) was detected using the purified polyclonal antibody.

- Immunohistochemistry (Formalin/PFA-fixed paraffin-embedded sections)

Formalin-fixed and paraffin-embedded human lung carcinoma tissue reacted with BAD polyclonal antibody (Cat # PAB2447), which was peroxidase-conjugated to the secondary antibody, followed by DAB staining. This data demonstrates the use of this antibody for immunohistochemistry; clinical relevance has not been evaluated.

## Gene Info — BAD

<b>Entrez GeneID</b>	<a href="#">572</a>
<b>Protein Accession#</b>	<a href="#">NP_116784;Q92934</a>
<b>Gene Name</b>	BAD
<b>Gene Alias</b>	BBC2, BCL2L8
<b>Gene Description</b>	BCL2-associated agonist of cell death
<b>Omim ID</b>	<a href="#">603167</a>
<b>Gene Ontology</b>	<a href="#">Hyperlink</a>
<b>Gene Summary</b>	The protein encoded by this gene is a member of the BCL-2 family. BCL-2 family members are known to be regulators of programmed cell death. This protein positively regulates cell apoptosis by forming heterodimers with BCL-xL and BCL-2, and reversing their death repressor activity. Proapoptotic activity of this protein is regulated through its phosphorylation. Protein kinases AKT and MAP kinase, as well as protein phosphatase calcineurin were found to be involved in the regulation of this protein. Alternative splicing of this gene results in two transcript variants which encode the same isoform. [provided by RefSeq]

**Other Designations**

BCL-X/BCL-2 binding protein|BCL2-antagonist of cell death protein|BCL2-binding component 6|  
BCL2-binding protein

## Publication Reference

- [Rac1 inhibits apoptosis in human lymphoma cells by stimulating Bad phosphorylation on Ser-75.](#)

Zhang B, Zhang Y, Shacter E.

Molecular and Cellular Biology 2004 Jul; 24(14):6205.

- [Inactivating mutations of proapoptotic Bad gene in human colon cancers.](#)

Lee JW, Soung YH, Kim SY, Nam SW, Kim CJ, Cho YG, Lee JH, Kim HS, Park WS, Kim SH, Lee JY, Yoo NJ, Lee SH.

Carcinogenesis 2004 Aug; 25(8):1371.

Application: IHC, Human, Human colon cancers

- [Quercetin-induced growth inhibition and cell death in nasopharyngeal carcinoma cells are associated with increase in Bad and hypophosphorylated retinoblastoma expressions.](#)

Ong CS, Tran E, Nguyen TT, Ong CK, Lee SK, Lee JJ, Ng CP, Leong C, Huynh H.

Oncology Reports 2004 Mar; 11(3):727.

Application: WB, Human, CNE2, HK1 cells

## Pathway

- [Acute myeloid leukemia](#)
- [Amyotrophic lateral sclerosis \(ALS\)](#)
- [Apoptosis](#)
- [Chronic myeloid leukemia](#)
- [Colorectal cancer](#)
- [Endometrial cancer](#)
- [ErbB signaling pathway](#)
- [Focal adhesion](#)
- [Insulin signaling pathway](#)
- [Melanoma](#)

- [Neurotrophin signaling pathway](#)
- [Non-small cell lung cancer](#)
- [Pancreatic cancer](#)
- [Pathways in cancer](#)
- [Prostate cancer](#)
- [VEGF signaling pathway](#)

## Disease

- [Cardiovascular Diseases](#)
- [Diabetes Mellitus](#)
- [Edema](#)
- [Genetic Predisposition to Disease](#)
- [Lymphoma](#)
- [Parkinson disease](#)
- [Thyroid Neoplasms](#)