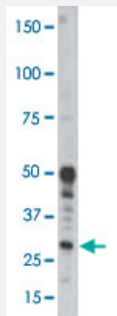


# BCL2A1 polyclonal antibody

Catalog # PAB2438

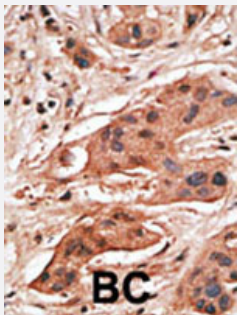
Size 400 uL

## Applications



### Western Blot (Tissue lysate)

Western blot analysis of BCL2A1 polyclonal antibody (Cat # PAB2438) in human placenta tissue lysate. BCL2A1 (arrow) was detected using purified polyclonal antibody. Secondary HRP-anti-rabbit was used for signal visualization with chemiluminescence.



### Immunohistochemistry (Formalin/PFA-fixed paraffin-embedded sections)

Formalin-fixed and paraffin-embedded human cancer tissue reacted with the BCL2A1 polyclonal antibody (Cat # PAB2438), which was peroxidase-conjugated to the secondary antibody, followed by DAB staining. This data demonstrates the use of this antibody for immunohistochemistry; clinical relevance has not been evaluated. BC = breast carcinoma.

## Specification

<b>Product Description</b>	Rabbit polyclonal antibody raised against synthetic peptide of BCL2A1.
<b>Immunogen</b>	A synthetic peptide corresponding to N-terminus of human BCL2A1.
<b>Host</b>	Rabbit
<b>Reactivity</b>	Human
<b>Specificity</b>	BH3 Domain Specific
<b>Form</b>	Liquid
<b>Purification</b>	Protein G purification

<b>Recommend Usage</b>	Western Blot (1:1000) Immunohistochemistry (1:50-100) The optimal working dilution should be determined by the end user.
<b>Storage Buffer</b>	In PBS (0.09% sodium azide)
<b>Storage Instruction</b>	Store at 4°C. For long term storage store at -20°C. Aliquot to avoid repeated freezing and thawing.
<b>Note</b>	This product contains sodium azide: a POISONOUS AND HAZARDOUS SUBSTANCE which should be handled by trained staff only.

## Applications

- Western Blot (Tissue lysate)

Western blot analysis of BCL2A1 polyclonal antibody (Cat # PAB2438) in human placenta tissue lysate. BCL2A1 (arrow) was detected using purified polyclonal antibody. Secondary HRP-anti-rabbit was used for signal visualization with chemiluminescence.

- Immunohistochemistry (Formalin/PFA-fixed paraffin-embedded sections)

Formalin-fixed and paraffin-embedded human cancer tissue reacted with the BCL2A1 polyclonal antibody (Cat # PAB2438), which was peroxidase-conjugated to the secondary antibody, followed by DAB staining. This data demonstrates the use of this antibody for immunohistochemistry; clinical relevance has not been evaluated. BC = breast carcinoma.

## Gene Info — BCL2A1

<b>Entrez GeneID</b>	<a href="#">597</a>
<b>Protein Accession#</b>	<a href="#">NP_004040:Q16548</a>
<b>Gene Name</b>	BCL2A1
<b>Gene Alias</b>	ACC-1, ACC-2, BCL2L5, BFL1, GRS, HBPA1
<b>Gene Description</b>	BCL2-related protein A1
<b>Omim ID</b>	<a href="#">601056</a>
<b>Gene Ontology</b>	<a href="#">Hyperlink</a>

**Gene Summary**

This gene encodes a member of the BCL-2 protein family. The proteins of this family form hetero- or homodimers and act as anti- and pro-apoptotic regulators that are involved in a wide variety of cellular activities such as embryonic development, homeostasis and tumorigenesis. The protein encoded by this gene is able to reduce the release of pro-apoptotic cytochrome c from mitochondria and block caspase activation. This gene is a direct transcription target of NF-kappa B in response to inflammatory mediators, and is up-regulated by different extracellular signals, such as granulocyte-macrophage colony-stimulating factor (GM-CSF), CD40, phorbol ester and inflammatory cytokine TNF and IL-1, which suggests a cytoprotective function that is essential for lymphocyte activation as well as cell survival. Alternatively spliced transcript variants encoding different isoforms have been found for this gene. [provided by RefSeq]

**Other Designations**

hematopoietic BCL2-related protein A1

**Publication Reference**

- [Gene expression changes and signaling events associated with the direct antimelanoma effect of IFN-gamma.](#)

Gollob JA, Sciambi CJ, Huang Z, Dressman HK.

Cancer Research 2005 Oct; 65(19):8869.

**Pathway**

- [Metabolic pathways](#)

**Disease**

- [Cardiovascular Diseases](#)
- [Dermatitis](#)
- [Diabetes Mellitus](#)
- [Edema](#)
- [Genetic Predisposition to Disease](#)
- [Graft vs Host Disease](#)
- [Hematologic Diseases](#)
- [Hodgkin Disease](#)
- [Kidney Failure](#)

- [Lymphoma](#)
- [Lymphoproliferative Disorders](#)
- [Occupational Diseases](#)
- [Waldenstrom Macroglobulinemia](#)
- [Werner syndrome](#)