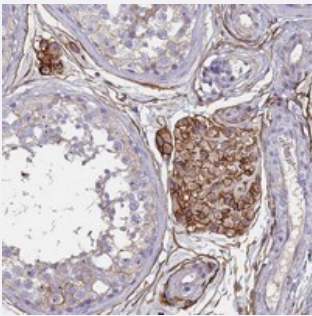


ABCA8 polyclonal antibody

Catalog # PAB24373 Size 100 uL

Applications



Immunohistochemistry (Formalin/PFA-fixed paraffin-embedded sections)

Immunohistochemical staining of human testis with ABCA8 polyclonal antibody (Cat # PAB24373) shows strong cytoplasmic and membranous positivity in Leydig cells at 1:50-1:200 dilution.

Specification

Product Description	Rabbit polyclonal antibody raised against recombinant ABCA8.
Immunogen	Recombinant protein corresponding to amino acids of human ABCA8.
Sequence	KEVLGLPDEESIKEFTANYPEEIVRVTFNTNTYSYHLKFLLGHGMPAKKEHKDHTAHCYETNEDVYC EVSFWKEGFVA
Host	Rabbit
Reactivity	Human
Form	Liquid
Purification	Antigen affinity purification
Isotype	IgG
Recommend Usage	Immunohistochemistry (1:50-1:200) The optimal working dilution should be determined by the end user.
Storage Buffer	In PBS, pH 7.2 (40% glycerol, 0.02% sodium azide)

Storage Instruction

Store at 4°C. For long term storage store at -20°C.
Aliquot to avoid repeated freezing and thawing.

Note

This product contains sodium azide: a POISONOUS AND HAZARDOUS SUBSTANCE which should be handled by trained staff only.

Applications

- Immunohistochemistry (Formalin/PFA-fixed paraffin-embedded sections)

Immunohistochemical staining of human testis with ABCA8 polyclonal antibody (Cat # PAB24373) shows strong cytoplasmic and membranous positivity in Leydig cells at 1:50-1:200 dilution.

Gene Info — ABCA8

Entrez GeneID[10351](#)**Protein Accession#**[O94911](#)**Gene Name**

ABCA8

Gene Alias

KIAA0822, MGC163152

Gene Description

ATP-binding cassette, sub-family A (ABC1), member 8

Gene Ontology[Hyperlink](#)**Gene Summary**

The membrane-associated protein encoded by this gene is a member of the superfamily of ATP-binding cassette (ABC) transporters. ABC proteins transport various molecules across extra- and intracellular membranes. ABC genes are divided into seven distinct subfamilies (ABC1, MDR/TAP, MRP, ALD, OABP, GCN20, White). This protein is a member of the ABC1 subfamily. Members of the ABC1 subfamily comprise the only major ABC subfamily found exclusively in multicellular eukaryotes. The function of this protein has not yet been determined. [provided by RefSeq]

Other Designations

ATP-binding cassette, sub-family A member 8

Pathway

- [ABC transporters](#)