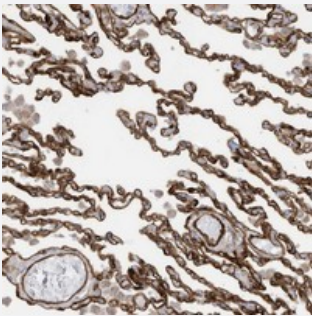


# ABCB7 polyclonal antibody

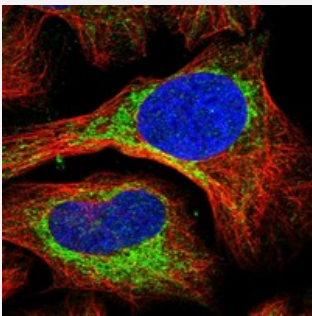
Catalog # PAB22645      Size 100 uL

## Applications



### Immunohistochemistry (Formalin/PFA-fixed paraffin-embedded sections)

Immunohistochemical staining of human lung with ABCB7 polyclonal antibody (Cat # PAB22645) shows strong membranous positivity in alveolar cells.



### Immunofluorescence

Immunofluorescent staining of human cell line U-2 OS with ABCB7 polyclonal antibody (Cat # PAB22645) at 1-4 ug/mL dilution shows positivity in cytoplasm and mitochondria.

## Specification

Product Description	Rabbit polyclonal antibody raised against recombinant ABCB7.
Immunogen	Recombinant protein corresponding to amino acids of human ABCB7.
Sequence	GAMKDVVKHRTSIFIAHRLSTVVDADEIIVLDQGKVAERGTHHGLLANPHSIYSEMWHTQSSRVQN HDNPKWEAKKENISKEEERKKLQEEI
Host	Rabbit
Reactivity	Human
Form	Liquid

Purification	Antigen affinity purification
Isotype	IgG
Recommend Usage	Immunohistochemistry (1:200-1:500) Immunofluorescence (1-4 ug/mL) The optimal working dilution should be determined by the end user.
Storage Buffer	In PBS, pH 7.2 (40% glycerol, 0.02% sodium azide)
Storage Instruction	Store at 4°C. For long term storage store at -20°C. Aliquot to avoid repeated freezing and thawing.
Note	This product contains sodium azide: a POISONOUS AND HAZARDOUS SUBSTANCE which should be handled by trained staff only.

## Applications

- Immunohistochemistry (Formalin/PFA-fixed paraffin-embedded sections)

Immunohistochemical staining of human lung with ABCB7 polyclonal antibody (Cat # PAB22645) shows strong membranous positivity in alveolar cells.

- Immunofluorescence

Immunofluorescent staining of human cell line U-2 OS with ABCB7 polyclonal antibody (Cat # PAB22645) at 1-4 ug/mL dilution shows positivity in cytoplasm and mitochondria.

## Gene Info — ABCB7

Entrez GeneID	<a href="#">22</a>
Protein Accession#	<a href="#">O75027</a>
Gene Name	ABCB7
Gene Alias	ABC7, ASAT, Atm1p, EST140535
Gene Description	ATP-binding cassette, sub-family B (MDR/TAP), member 7
Omim ID	<a href="#">300135</a> <a href="#">301310</a>
Gene Ontology	<a href="#">Hyperlink</a>

**Gene Summary**

The membrane-associated protein encoded by this gene is a member of the superfamily of ATP-binding cassette (ABC) transporters. ABC proteins transport various molecules across extra- and intra-cellular membranes. ABC genes are divided into seven distinct subfamilies (ABC1, MDR/TAP, MRP, ALD, OABP, GCN20, White). This protein is a member of the MDR/TAP subfamily. Members of the MDR/TAP subfamily are involved in multidrug resistance as well as antigen presentation. This gene encodes a half-transporter involved in the transport of heme from the mitochondria to the cytosol. With iron/sulfur cluster precursors as its substrates, this protein may play a role in metal homeostasis. Mutations in this gene have been implicated in X-linked sideroblastic anemia with ataxia. [provided by RefSeq]

**Other Designations**

ATP-binding cassette 7|ATP-binding cassette, sub-family B, member 7|OTTHUMP00000023578

**Pathway**

- [ABC transporters](#)