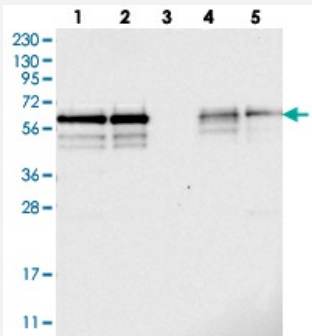


BSDC1 polyclonal antibody

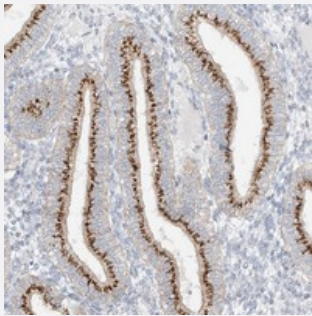
Catalog # PAB22545 Size 100 uL

Applications



Western Blot

Western blot analysis of Lane 1: RT-4, Lane 2: U-251 MG, Lane 3: Human Plasma, Lane 4: Liver, Lane 5: Tonsil with BSDC1 polyclonal antibody (Cat # PAB22545) at 1:250-1:500 dilution.



Immunohistochemistry (Formalin/PFA-fixed paraffin-embedded sections)

Immunohistochemical staining of human corpus, uterine with BSDC1 polyclonal antibody (Cat # PAB22545) shows strong cytoplasmic positivity with a granular pattern in glandular cells at 1:200-1:500 dilution.

Specification

Product Description	Rabbit polyclonal antibody raised against recombinant BSDC1.
Immunogen	Recombinant protein corresponding to amino acids of human BSDC1.
Sequence	GISPISPKEAKVPVAKISTFPEGEGPGQPSPCEENLVTSVEPPAEVTPSESSSESISLVTQIANPATAP EARVLPKDLSQK
Host	Rabbit
Reactivity	Human
Form	Liquid

Purification	Antigen affinity purification
Isotype	IgG
Recommend Usage	Immunohistochemistry (1:200-1:500) Western Blot (1:250-1:500) The optimal working dilution should be determined by the end user.
Storage Buffer	In PBS, pH 7.2 (40% glycerol, 0.02% sodium azide)
Storage Instruction	Store at 4°C. For long term storage store at -20°C. Aliquot to avoid repeated freezing and thawing.
Note	This product contains sodium azide: a POISONOUS AND HAZARDOUS SUBSTANCE which should be handled by trained staff only.

Applications

- Western Blot

Western blot analysis of Lane 1: RT-4, Lane 2: U-251 MG, Lane 3: Human Plasma, Lane 4: Liver, Lane 5: Tonsil with BSDC1 polyclonal antibody (Cat # PAB22545) at 1:250-1:500 dilution.

- Immunohistochemistry (Formalin/PFA-fixed paraffin-embedded sections)

Immunohistochemical staining of human corpus, uterine with BSDC1 polyclonal antibody (Cat # PAB22545) shows strong cytoplasmic positivity with a granular pattern in glandular cells at 1:200-1:500 dilution.

Gene Info — BSDC1

Entrez GeneID	55108
Protein Accession#	Q9NW68
Gene Name	BSDC1
Gene Alias	DKFZp686B09139, FLJ10276
Gene Description	BSD domain containing 1
Gene Ontology	Hyperlink
Other Designations	OTTHUMP00000008869

Publication Reference

- [Combined Gene Therapy to Reduce the Neuronal Damage in the Mouse Model of Focal Ischemic Injury.](#)

Molcho L, Ben-Zur T, Barhum Y, Angel A, Glat M, Offen D.

Journal of Molecular Neuroscience : MN 2018 Oct; 66(2):180.

Application: IF, IHC, Mouse, Mouse brains