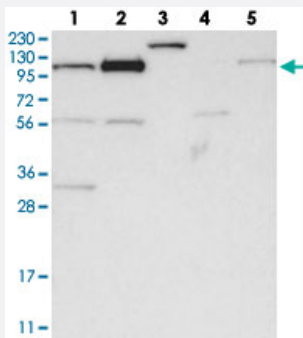


AASS polyclonal antibody

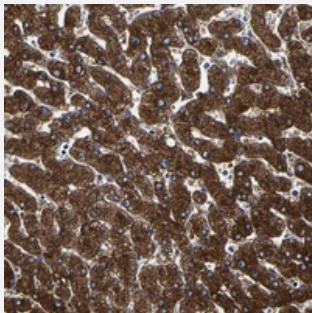
Catalog # PAB21329 Size 100 uL

Applications



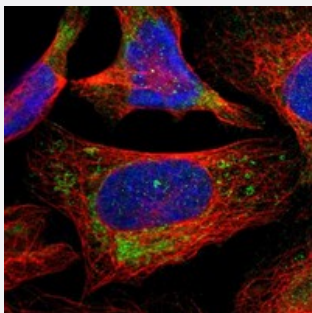
Western Blot

Western blot analysis of Lane 1: RT-4, Lane 2: U-251 MG, Lane 3: Human Plasma, Lane 4: Liver, Lane 5: Tonsil with AASS polyclonal antibody (Cat # PAB21329) at 1:250-1:500 dilution.



Immunohistochemistry (Formalin/PFA-fixed paraffin-embedded sections)

Immunohistochemical staining of human liver with AASS polyclonal antibody (Cat # PAB21329) shows strong cytoplasmic positivity in hepatocytes at 1:200-1:500 dilution.



Immunofluorescence

Immunofluorescent staining of human cell line U-2 OS with AASS polyclonal antibody (Cat # PAB21329) at 1-4 ug/mL dilution shows positivity in cytoplasm and mitochondria.

Specification

Product Description

Rabbit polyclonal antibody raised against recombinant AASS.

Immunogen

Recombinant protein corresponding to amino acids of human AASS.

Sequence	MLQVHRTGLGRLGVSLSKGLHHKAVLAVRREDVNAWERRAPLAPKHIKGITNLGYKVLIQPSNRR AIHDKDYVKAGGILQEDISEACLILGVKRPPEEKLMRSKTYAFFSHTIKAQEANMGLLDEILKQEIR
Host	Rabbit
Reactivity	Human
Form	Liquid
Purification	Antigen affinity purification
Isotype	IgG
Recommend Usage	Immunohistochemistry (1:200-1:500) Western Blot (1:250-1:500) Immunofluorescence (1-4 ug/mL) The optimal working dilution should be determined by the end user.
Storage Buffer	In PBS, pH 7.2 (40% glycerol, 0.02% sodium azide)
Storage Instruction	Store at 4°C. For long term storage store at -20°C. Aliquot to avoid repeated freezing and thawing.
Note	This product contains sodium azide: a POISONOUS AND HAZARDOUS SUBSTANCE which should be handled by trained staff only.

Applications

- Western Blot

Western blot analysis of Lane 1: RT-4, Lane 2: U-251 MG, Lane 3: Human Plasma, Lane 4: Liver, Lane 5: Tonsil with AASS polyclonal antibody (Cat # PAB21329) at 1:250-1:500 dilution.

- Immunohistochemistry (Formalin/PFA-fixed paraffin-embedded sections)

Immunohistochemical staining of human liver with AASS polyclonal antibody (Cat # PAB21329) shows strong cytoplasmic positivity in hepatocytes at 1:200-1:500 dilution.

- Immunofluorescence

Immunofluorescent staining of human cell line U-2 OS with AASS polyclonal antibody (Cat # PAB21329) at 1-4 ug/mL dilution shows positivity in cytoplasm and mitochondria.

Gene Info — AASS

Entrez GeneID [10157](#)

Protein Accession# [Q9UDR5](#)

Gene Name	AASS
Gene Alias	LKR/SDH, LKRSDH, LORS DH
Gene Description	aminoadipate-semialdehyde synthase
Omim ID	238700 268700 605113
Gene Ontology	Hyperlink
Gene Summary	This gene encodes a bifunctional enzyme that catalyzes the first two steps in the mammalian lysine degradation pathway. The N-terminal and the C-terminal portions of this enzyme contain lysine-ketoglutarate reductase and saccharopine dehydrogenase activity, respectively, resulting in the conversion of lysine to alpha-aminoadipic semialdehyde. Mutations in this gene are associated with familial hyperlysinemia. [provided by RefSeq]
Other Designations	alpha-aminoadipate semialdehyde synthase aminoadipic semialdehyde synthase lysine-2-oxoglutarate reductase lysine-ketoglutarate reductase /saccharopine dehydrogenase

Pathway

- [Biosynthesis of alkaloids derived from ornithine](#)
- [Lysine biosynthesis](#)
- [Lysine degradation](#)
- [Metabolic pathways](#)