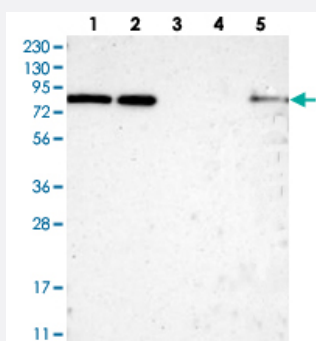


HCFC2 polyclonal antibody

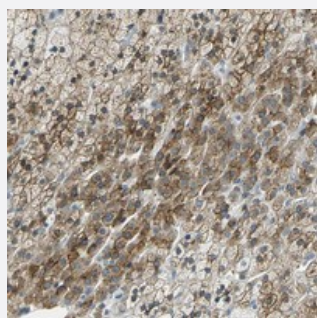
Catalog # PAB20343 Size 100 uL

Applications



Western Blot

Western blot analysis of Lane 1: RT-4, Lane 2: U-251 MG, Lane 3: Human Plasma, Lane 4: Liver, Lane 5: Tonsil with HCFC2 polyclonal antibody (Cat # PAB20343) at 1:250-1:500 dilution.



Immunohistochemistry (Formalin/PFA-fixed paraffin-embedded sections)

Immunohistochemical staining of human adrenal gland with HCFC2 polyclonal antibody (Cat # PAB20343) shows strong cytoplasmic and membranous positivity in cortical cells at 1:50-1:200 dilution.

Specification

Product Description	Rabbit polyclonal antibody raised against recombinant HCFC2.
Immunogen	Recombinant protein corresponding to amino acids of human HCFC2.
Sequence	APSQVQLIKATTNSFHVKWDEVSTVEGYLLQLSTDLPYQAASSDSSAAPNMQGV RMDPHRQGS NNVPNSINDTINSTKTEQPATKETSMKNKPDFKALTD SNAILYPSLASNASNHNSHVVDMLRKNEG PHTSANVGV
Host	Rabbit
Reactivity	Human
Form	Liquid

Purification	Antigen affinity purification
Isotype	IgG
Recommend Usage	Immunohistochemistry (1:50-1:200) Western Blot (1:250-1:500) The optimal working dilution should be determined by the end user.
Storage Buffer	In PBS, pH 7.2 (40% glycerol, 0.02% sodium azide)
Storage Instruction	Store at 4°C. For long term storage store at -20°C. Aliquot to avoid repeated freezing and thawing.
Note	This product contains sodium azide: a POISONOUS AND HAZARDOUS SUBSTANCE which should be handled by trained staff only.

Applications

- Western Blot

Western blot analysis of Lane 1: RT-4, Lane 2: U-251 MG, Lane 3: Human Plasma, Lane 4: Liver, Lane 5: Tonsil with HCFC2 polyclonal antibody (Cat # PAB20343) at 1:250-1:500 dilution.

- Immunohistochemistry (Formalin/PFA-fixed paraffin-embedded sections)

Immunohistochemical staining of human adrenal gland with HCFC2 polyclonal antibody (Cat # PAB20343) shows strong cytoplasmic and membranous positivity in cortical cells at 1:50-1:200 dilution.

Gene Info — HCFC2

Entrez GeneID	29915
Protein Accession#	Q9Y5Z7
Gene Name	HCFC2
Gene Alias	FLJ94012, HCF-2, HCF2
Gene Description	host cell factor C2
Omim ID	607926
Gene Ontology	Hyperlink

Gene Summary

This gene encodes one of two proteins which interact with VP16, a herpes simplex virus protein that initiates virus infection. Both the encoded protein and the original Herpes host cell factor interact with VP16 through a beta-propeller domain. The original Herpes host cell factor, however, is effective at initiating viral infection while the encoded protein is not. Transcripts of varying length due to alternative polyadenylation signals have been described. [provided by RefSeq]

Other Designations

host cell factor 2