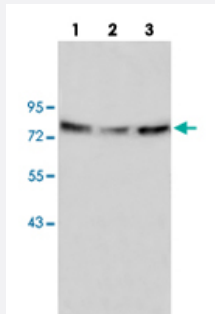


ANXA6 polyclonal antibody

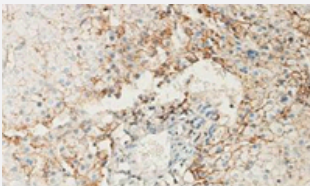
Catalog # PAB19793 Size 100 ug

Applications



Western Blot

Western blot analysis of 293 (Lane 1), human fetal liver (Lane 2) and HepG2 (Lane 3) lysate with ANXA6 polyclonal antibody (Cat # PAB19793) at 1:500 dilution.



Immunohistochemistry (Formalin/PFA-fixed paraffin-embedded sections)

Immunohistochemical staining of formalin-fixed paraffin-embedded human fetal liver showing staining with ANXA6 polyclonal antibody (Cat # PAB19793) at 1:100 dilution.

Specification

Product Description	Rabbit polyclonal antibody raised against synthetic peptide of ANXA6.
Immunogen	A synthetic peptide corresponding to 16 amino acids at N-terminus of human ANXA6.
Host	Rabbit
Reactivity	Human
Form	Liquid
Purification	Peptide affinity purification

Recommend Usage	ELISA (1:20000-1:80000) Western Blot (1:200-1000) Immunohistochemistry (1:50-200) The optimal working dilution should be determined by the end user.
Storage Buffer	In serum (0.02% sodium azide)
Storage Instruction	Store at 4°C for three months. For long term storage store at -20°C. Aliquot to avoid repeated freezing and thawing.
Note	This product contains sodium azide: a POISONOUS AND HAZARDOUS SUBSTANCE which should be handled by trained staff only.

Applications

- Western Blot

Western blot analysis of 293 (Lane 1), human fetal liver (Lane 2) and HepG2 (Lane 3) lysate with ANXA6 polyclonal antibody (Cat # PAB19793) at 1:500 dilution.

- Immunohistochemistry (Formalin/PFA-fixed paraffin-embedded sections)

Immunohistochemical staining of formalin-fixed paraffin-embedded human fetal liver showing staining with ANXA6 polyclonal antibody (Cat # PAB19793) at 1:100 dilution.

- Enzyme-linked Immunoabsorbent Assay

Gene Info — ANXA6

Entrez GeneID	309
Protein Accession#	P08133
Gene Name	ANXA6
Gene Alias	ANX6, CBP68
Gene Description	annexin A6
Omim ID	114070
Gene Ontology	Hyperlink

Gene Summary

Annexin VI belongs to a family of calcium-dependent membrane and phospholipid binding proteins. Although their functions are still not clearly defined, several members of the annexin family have been implicated in membrane-related events along exocytotic and endocytotic pathways. The annexin VI gene is approximately 60 kbp long and contains 26 exons. It encodes a protein of about 68 kDa that consists of eight 68-amino acid repeats separated by linking sequences of variable lengths. It is highly similar to human annexins I and II sequences, each of which contain four such repeats. Exon 21 of annexin VI is alternatively spliced, giving rise to two isoforms that differ by a 6-amino acid insertion at the start of the seventh repeat. Annexin VI has been implicated in mediating the endosome aggregation and vesicle fusion in secreting epithelia during exocytosis. [provided by RefSeq]

Other Designations

annexin VI|annexin VI (p68)|calcium-binding protein p68|calelectrin|calphobindin II

Disease

- [Femur Head Necrosis](#)
- [Genetic Predisposition to Disease](#)