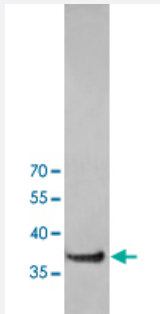


# ANXA2 polyclonal antibody

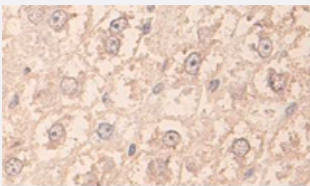
Catalog # PAB19792      Size 100 ug

## Applications



### Western Blot (Cell lysate)

Western blot analysis of HeLa cell lysate with ANXA2 polyclonal antibody (Cat # PAB19792) at 1:200 dilution.



### Immunohistochemistry (Formalin/PFA-fixed paraffin-embedded sections)

Immunohistochemical staining of formalin-fixed paraffin-embedded human liver showing staining with ANXA2 polyclonal antibody (Cat # PAB19792) at 1:100 dilution.

## Specification

<b>Product Description</b>	Rabbit polyclonal antibody raised against synthetic peptide of ANXA2.
<b>Immunogen</b>	A synthetic peptide corresponding to 16 amino acids near N-terminus of human ANXA2.
<b>Host</b>	Rabbit
<b>Reactivity</b>	Human, Mouse, Rat
<b>Form</b>	Liquid
<b>Purification</b>	Peptide affinity purification

<b>Recommend Usage</b>	ELISA (1:1000-1:10000) Western Blot (1:200-500) Immunohistochemistry (1:50-200) The optimal working dilution should be determined by the end user.
<b>Storage Buffer</b>	In serum (0.02% sodium azide)
<b>Storage Instruction</b>	Store at 4°C for three months. For long term storage store at -20°C. Aliquot to avoid repeated freezing and thawing.
<b>Note</b>	This product contains sodium azide: a POISONOUS AND HAZARDOUS SUBSTANCE which should be handled by trained staff only.

## Applications

- Western Blot (Cell lysate)

Western blot analysis of HeLa cell lysate with ANXA2 polyclonal antibody (Cat # PAB19792) at 1:200 dilution.

- Immunohistochemistry (Formalin/PFA-fixed paraffin-embedded sections)

Immunohistochemical staining of formalin-fixed paraffin-embedded human liver showing staining with ANXA2 polyclonal antibody (Cat # PAB19792) at 1:100 dilution.

- Enzyme-linked Immunoabsorbent Assay

## Gene Info — ANXA2

<b>Entrez GeneID</b>	<a href="#">302</a>
<b>Protein Accession#</b>	<a href="#">P07355</a>
<b>Gene Name</b>	ANXA2
<b>Gene Alias</b>	ANX2, ANX2L4, CAL1H, LIP2, LPC2, LPC2D, P36, PAP-IV
<b>Gene Description</b>	annexin A2
<b>Omim ID</b>	<a href="#">151740</a>
<b>Gene Ontology</b>	<a href="#">Hyperlink</a>

**Gene Summary**

This gene encodes a member of the annexin family. Members of this calcium-dependent phospholipid-binding protein family play a role in the regulation of cellular growth and in signal transduction pathways. This protein functions as an autocrine factor which heightens osteoclast formation and bone resorption. This gene has three pseudogenes located on chromosomes 4, 9 and 10, respectively. Multiple alternatively spliced transcript variants encoding different isoforms have been found for this gene. [provided by RefSeq]

**Other Designations**

OTTHUMP00000163650|annexin III|calpactin I heavy polypeptide|chromobindin 8|lipocortin II|platelet anticoagulant protein IV

**Disease**

- [Anemia](#)
- [Cardiovascular Diseases](#)
- [Diabetes Mellitus](#)
- [Edema](#)
- [Genetic Predisposition to Disease](#)
- [Osteonecrosis](#)
- [Prostatic Neoplasms](#)
- [Tobacco Use Disorder](#)